

THE JENNINGS ROYAL FAMILY LITTLE DUKE AND DUCHESS

Reel Machines:
 LITTLE DUKE ("Reel Card") July 1932
 LITTLE DUKE Aug. 1932
 LITTLE DUKE BALL GUM VENDER Sept. 1932
 LITTLE DUKE MODEL A Oct. 1932
 LITTLE DUKE VENDER MODEL B Oct. 1932
 LITTLE DUKE JACKPOT MODEL C Oct. 1932
 LITTLE DUKE JACKPOT VENDER MODEL D Oct. 1932
 IMPROVED LITTLE DUKE MODEL A Dec. 1932
 IMPROVED LITTLE DUKE VENDER MODEL B Dec. 1932
 IMPROVED LITTLE DUKE JACKPOT MODEL C Dec. 1932
 IMPROVED LITTLE DUKE JACKPOT MODEL C ("Totalizer") Dec. 1932
 IMPROVED LITTLE DUKE JACKPOT VENDER MODEL D Dec. 1932
 SELECTIVE LITTLE DUKE Feb. 1933
 SELECTIVE LITTLE DUKE VENDER Feb. 1933
 SELECTIVE LITTLE DUKE JACKPOT Feb. 1933
 SELECTIVE LITTLE DUKE JACKPOT VENDER Feb. 1933
 DUCHESS VENDER March 1933
 DUCHESS IMPROVED LITTLE DUKE JACKPOT MINT VENDER May 1933
 SELECTIVE LITTLE DUKE JACKPOT MINT VENDER May 1933

DUCHESS BALL GUM VENDER Aug. 1933
 LITTLE DUKE TRIPL-JACK Sept. 1933
 LITTLE DUKE TRIPL-JACK VENDER Sept. 1933
 SELECTIVE LITTLE DUKE TRIPL- JACK Sept. 1933
 SELECTIVE LITTLE DUKE TRIPL-JACK VENDER Sept. 1933
 SELECTIVE LITTLE DUKE TRIPL-JACK MINT VENDER Sept. 1933
 DUCHESS DOUBL-JACK ("Bullseye") July 1934
 DUCHESS DOUBL-JACK VENDER ("Bullseye") July 1934
 SELECTIVE DUCHESS DOUBL-JACK ("Bullseye") July 1934
 SELECTIVE DUCHESS DOUBL-JACK VENDER ("Bullseye") July 1934

Counter Wheel Machines:
 EMPRESS 1932
 EMPRESS VENDER 1932

E.C. Bignell (Paris, France)

Bell Machines:
 PETIT DUC 1931

Counter Wheel Machines:
 EMPRESS 1931

A lone among the slot machines produced by a major manufacturer in the United States in the first four decades of coin operated gambling machines, the Jennings LITTLE DUKE had its origins in Europe. Initially created in Paris, France by E.C. Bignell, the Jennings representative on the continent, as an advanced development of the late nineteenth century American D.N. Schall and early twentieth century French Pierre - Abel Nau automatic payout color wheels, the PETIT DUC was offered to Jennings on a reciprocal production basis giving Bignell all the machines he needed at cost while the O.D. Jennings & Company in America was provided with a new product offering. The first production machines went to Bignell in France, with "Reel Card" symbols showing the sun, moon and planets with the first American models offered the same way. These allegorical symbols were quickly changed to the typical American fruits, and the LITTLE DUKE took off. First offered in July 1932 in a single model, by October the line had expanded to four machines which, by December, had all been improved with bullseye coin viewing detectors and new handles, all of which were packaged in original Art Deco cabinet designs for which the graphics had come directly from France. The timing couldn't have been



Jennings *LITTLE DUKE JACKPOT VENDER MODEL D* of October 1932 has plain handle, plain wood right top panel, a jackpot imposed on the front casting and a side gumball vender. The right cup cutout has been used as a patent panel, with copy "U.S.A. Patent No. 1562771 Patent Pending." Deco arrows are black with red and yellow wings. Michael Connolly Collection.



Early *LITTLE DUKE* production for the export market, summer 1932. The tall Deco arrows are yellow with black middle and red outside wings. Dual payout cup cutouts are evident, a vestigial homage to its French Pierre - Abel Nau parentage, suggesting the color wheel *EMPRESS* model with small pay out of the left cup and larger pays in tokens on the right. On the *LITTLE DUKE* only the left cup was used. Play is English Penny, serial 109. Michael Connolly Collection.

better for the machine was a sensation.

The adaptability of the *LITTLE DUKE* to accept other design changes and components soon made the line highly diverse. In February 1933 the selective coin head, a large and cumbersome coin chute that had been created by Emery Mihalek in 1930 for the *TODAY* and *VICTORIA* lines, was added to the *LITTLE DUKE*, making the machine much taller and consider-

ably changing its appearance. Not one to risk the loss of his prize pupil, Ode D. Jennings himself took out a Design Patent to protect the new look, and just in time. The earlier *LITTLE DUKE* cabinet design, entering the country unprotected, was already being copied by another smaller Chicago producer with the cheaper, less sophisticated machines entering the market under four other makers' names. The granted



The change is in! The *IMPROVED LITTLE DUKE MODEL A* of December 1932 has a bullseye coin detector in its top right panel and a knob-headed handle. The 1,562,771 patent number in the lower right panel is for the improved Switch track coinhead which O.D. Jennings filed for patent on December 1, 1924, later to be used on the *LITTLE DUKE*. Dan Adams Photography.



Jennings *LITTLE DUKE JACKPOT VENDER MODEL D* of October 1932 has plain handle, plain wood right top panel, a jackpot imposed on the front casting and a side gumball vender. The right cup cutout has been used as a patent panel, with copy "U.S.A. Patent No. 1562771 Patent Pending." Deco arrows are black with red and yellow wings. Michael Connolly Collection.



Early *LITTLE DUKE* production for the export market, summer 1932. The tall Deco arrows are yellow with black middle and red outside wings. Dual payout cup cutouts are evident, a vestigial homage to its French Pierre - Abel Nau parentage, suggesting the color wheel *EMPRESS* model with small pay out of the left cup and larger pays in tokens on the right. On the *LITTLE DUKE* only the left cup was used. Play is English Penny, serial 109. Michael Connolly Collection.

better for the machine was a sensation.

The adaptability of the *LITTLE DUKE* to accept other design changes and components soon made the line highly diverse. In February 1933 the selective coin head, a large and cumbersome coin chute that had been created by Emery Mihalek in 1930 for the *TODAY* and *VICTORIA* lines, was added to the *LITTLE DUKE*, making the machine much taller and consider-

ably changing its appearance. Not one to risk the loss of his prize pupil, Ode D. Jennings himself took out a Design Patent to protect the new look, and just in time. The earlier *LITTLE DUKE* cabinet design, entering the country unprotected, was already being copied by another smaller Chicago producer with the cheaper, less sophisticated machines entering the market under four other makers' names. The granted



The change is in! The *IMPROVED LITTLE DUKE MODEL A* of December 1932 has a bullseye coin detector in its top right panel and a knob-headed handle. The 1,562,771 patent number in the lower right panel is for the improved Switch track coinhead which O.D. Jennings filed for patent on December 1, 1924, later to be used on the *LITTLE DUKE*. Dan Adams Photography.

Nov. 29, 1932.

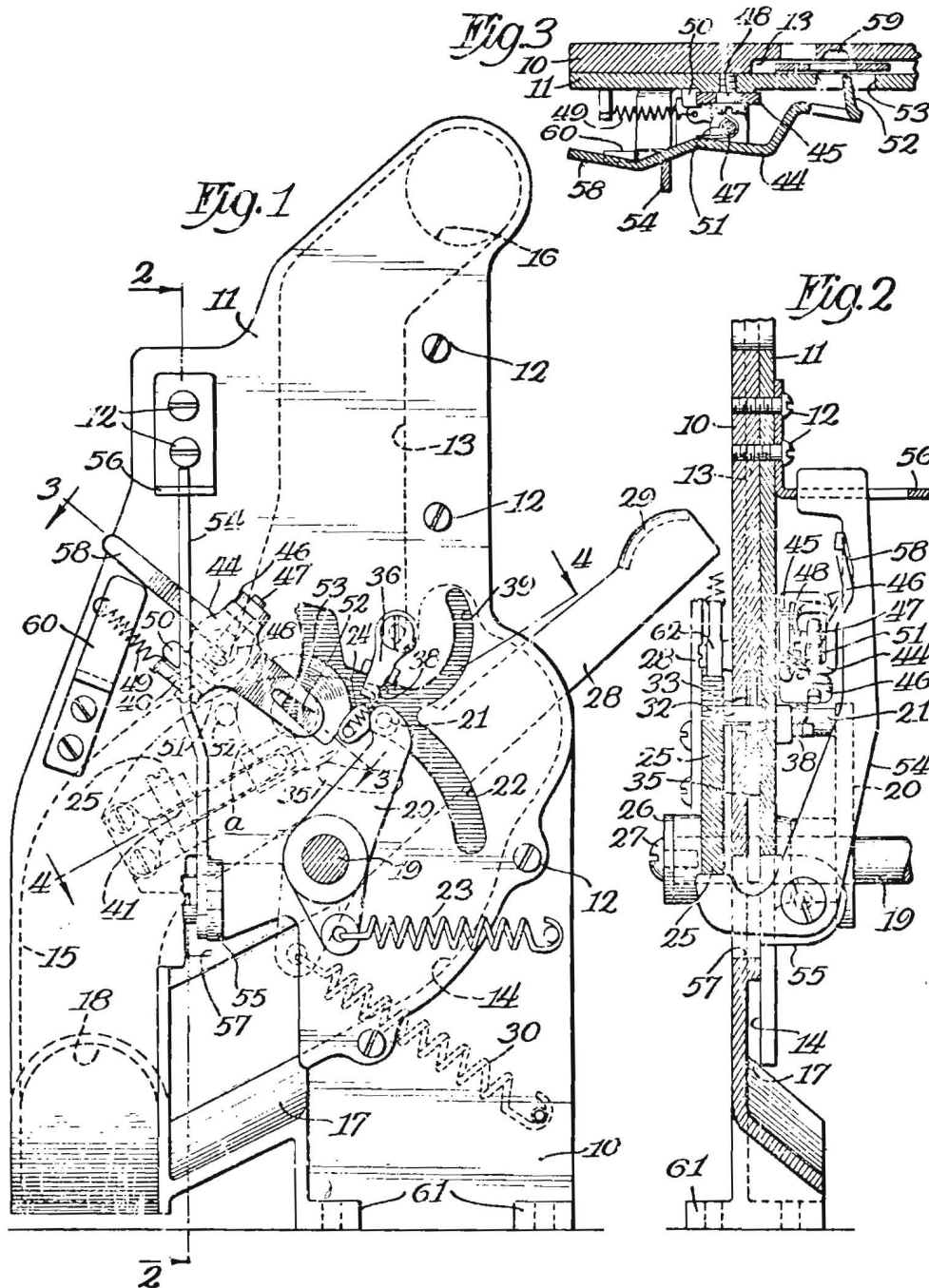
E. MIHALEK

1,889,212

COIN CONTROLLED APPARATUS

Filed May 21, 1930

2 Sheets-Sheet 1



Inventor:
Emery Mihalek
 By *Fisher, Clapp, Crane & Pond* Attys.

Above and following page: The Selective Coin Head with a bent coin return was developed by Emery Mihalek in 1930 for the TODAY vender and VICTORIA Bells and used on the LITTLE DUKE and CENTURY. Mihalek filed for a patent on May 21, 1930, receiving it for the O.D. Jennings & Company on November 29, 1932 as 1,889,212. As important as this device was to the LITTLE DUKE and DUCHESS its patent number never appeared on the machines. U.S. Patent Office.

Nov. 29, 1932.

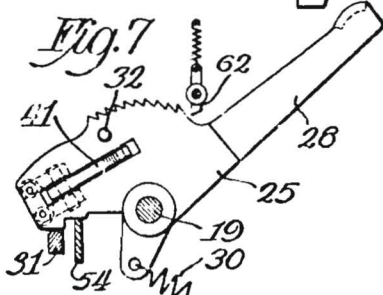
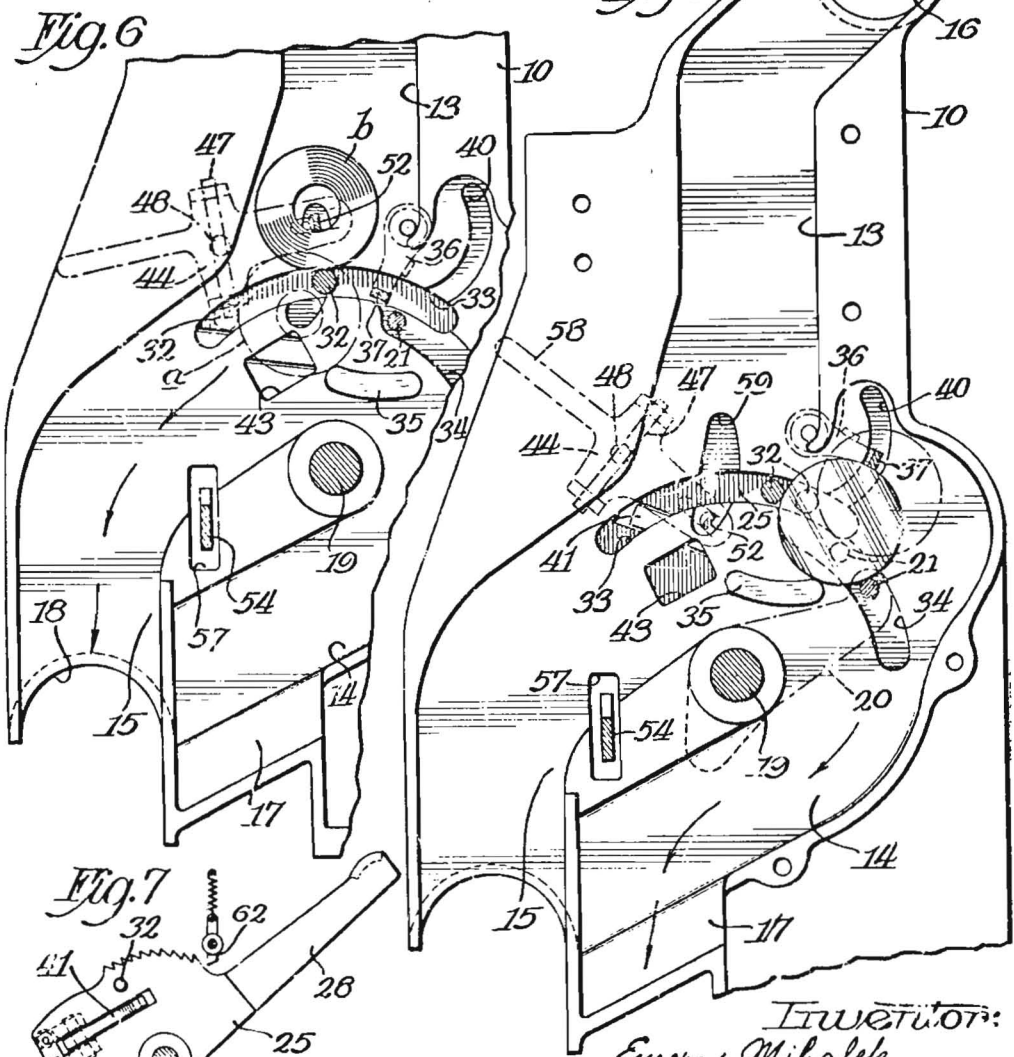
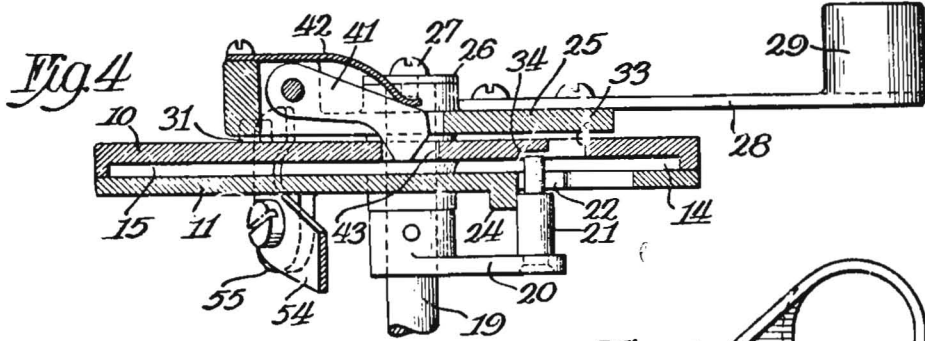
E. MIHALEK

1,889,212

COIN CONTROLLED APPARATUS

Filed May 21, 1930

2 Sheets-Sheet 2



Inventor:
 Emery Mihalek
 By Ficker, Clapp, Evans & Pord
 Attys

patent of the design put an end to any further Chinese copies, and the copycat producers revised their three disc format to three reels, ending the similarities.

Other LITTLE DUKE variants were even more dramatic. In place of the three discs the original model had a single color wheel along the lines of the original D.N. Schall format, giving Jennings a 5-way coin head model called the EMPRESS in both straight payout and vender models in an aluminum Deco designed cabinet. The most interesting change, coming less than a year after the machine was first introduced in America, was also the most comprehensive. By turning the mechanism ninety degrees, with the disc shaft now horizontal rather than head on, the shaft was spindled for three reels, giving Jennings a new miniaturized Bell machine in competition with the Pace BANTAM and Mills Novelty JUNIOR SILENT "Indian Head," later to become the Q.T. Bell. Jennings called the new machine DUCHESS, available in Bell and front vender models. The group of three - LITTLE DUKE, DUCHESS and EMPRESS - became known as The Royal Family, with Jennings recommending the first two be operated as a "Team." In 1934 the DUCHESS was also upgraded to a bullseye format. Meanwhile the LITTLE DUKE was provided with a Tripl-Jack three jackpot front in both its straight and selective coin head, sharing this feature with the CENTURY line of full size Bell machines, making these the only two Jennings machine lines to carry this feature. It was never added to the DUCHESS or the later CHIEF lines, making Tripl-Jack a short lived feature.

The aggressive rate of change of the LITTLE DUKE and DUCHESS lines may seem to cause confusion, but at the time the changes were both understood and accepted. For one thing there was little question which model was which for the front castings and cabinet reflected every alteration. The trim patterns and size of the Deco designs on the LITTLE DUKE changed from model to model, making the variations easy to identify, while the DUCHESS was restricted to two basic cabinet designs. All were supported by changing inside paper and data sheets or folders, the latter serving as manuals. It was here that Jennings took an interesting step back into the past. Where the Jennings VICTORIA and seemingly the VICTORIA SILENT got away from the

parts-on-a-board concept, the LITTLE DUKE literature returned to the older format. The major castings were laid out on a large panel four boards deep, while the smaller parts were presented

February, 1933

AUTOMATIC AGE

on a panel six boards deep. LITTLE DUKE parts are coded "EB," while interchangeable parts with other Jennings Bells retain their original codes.

223

WE'RE EXPECTING YOU
at O. D. JENNINGS & COMPANY

Open House

FEBRUARY 20, 21, 22, 23

BIG DOINGS AT THE JENNINGS FACTORY
4309-39 W. LAKE ST., CHICAGO, ILL.

Bring Your Appetite

Pack up all your worries and
leave 'em here.

See the Improved "Little Duke"

The most sensational little money-maker ever offered
to the operators.

... and, you'll be interested in several new JENNINGS
machines which will be on display during the Coin
Machine Show.

Meet us at the Show

Be sure to attend OPEN HOUSE
at the Jennings Factory.

O. D. JENNINGS & COMPANY CHICAGO

Always mention AUTOMATIC AGE when writing to advertisers

The new SELECTIVE LITTLE DUKE was announced with some fanfare during the February 1933 coin machine trade show. This ad, appearing in the February 1933 issue of "The Automatic Age," promises "Big doings at the Jennings factory." Author's Collection.

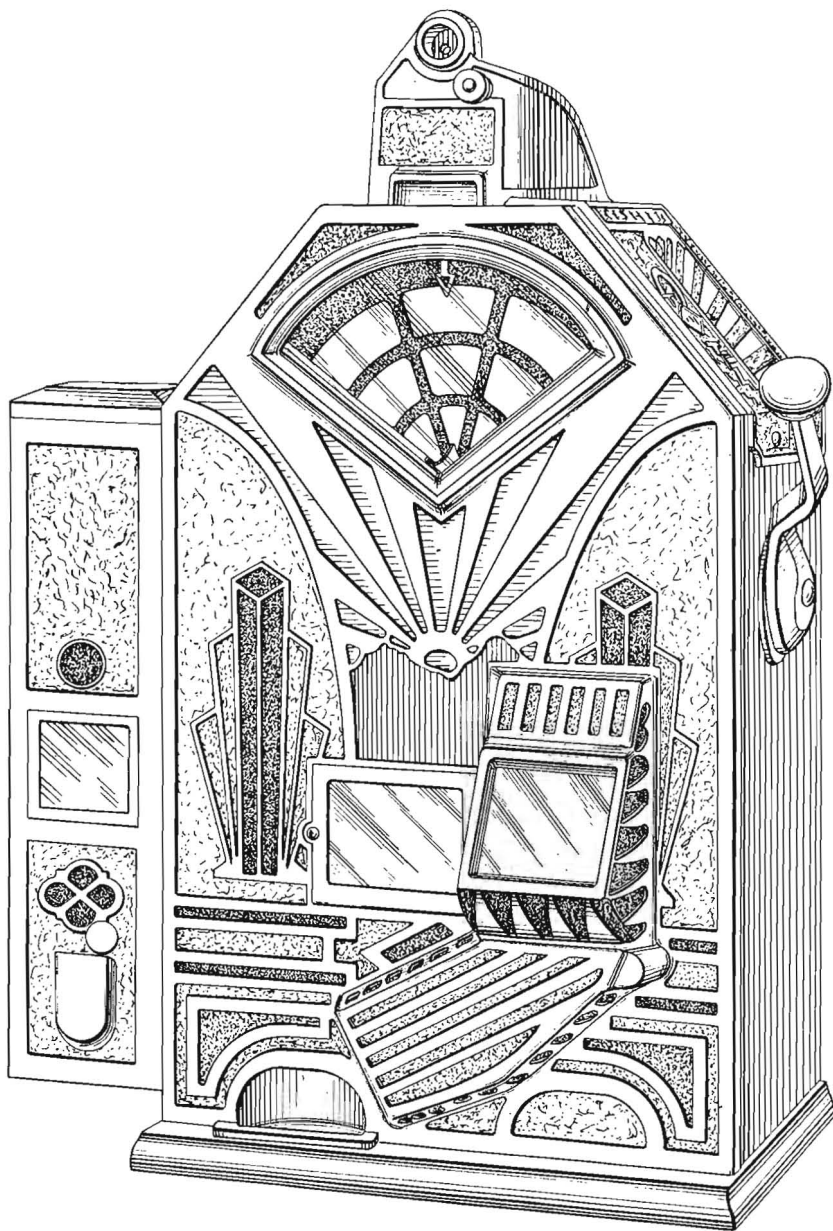
June 20, 1933.

O. D. JENNINGS

Des. 90,158

VENDING MACHINE

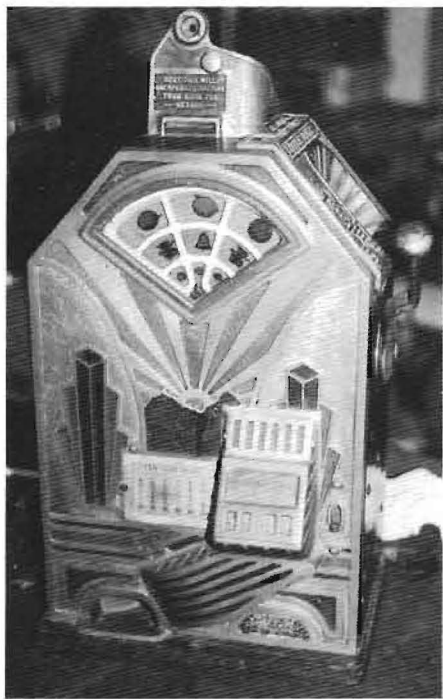
Filed March 15, 1933



Inventor:
Ode D. Jennings

By
Williams, Bradbury, McCaleb & Hinkle
1933

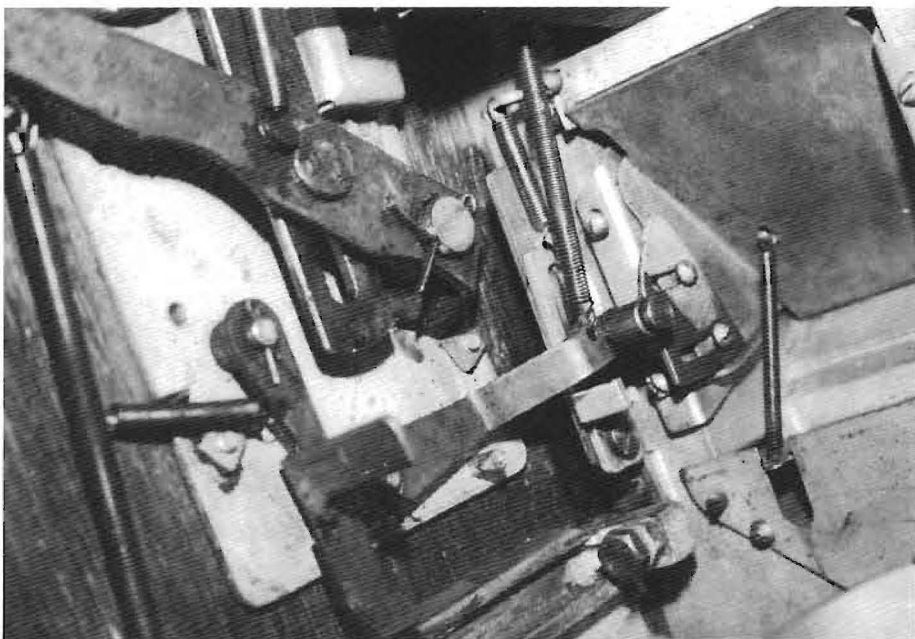
In an attempt to protect the newer design of the LITTLE DUKE, Ode D. Jennings applied for a Design Patent on the SELECTIVE LITTLE DUKE JACKPOT on March 15, 1933. He received DE 90,158 on June 10. Patent drawing shows bullseye, knob handle and "Fat Deco" arrows. Right cutout panel is shown plain, whereas actual use was as a patent panel. Jackpot knob at right of pot is also missing. U.S. Patent Office.



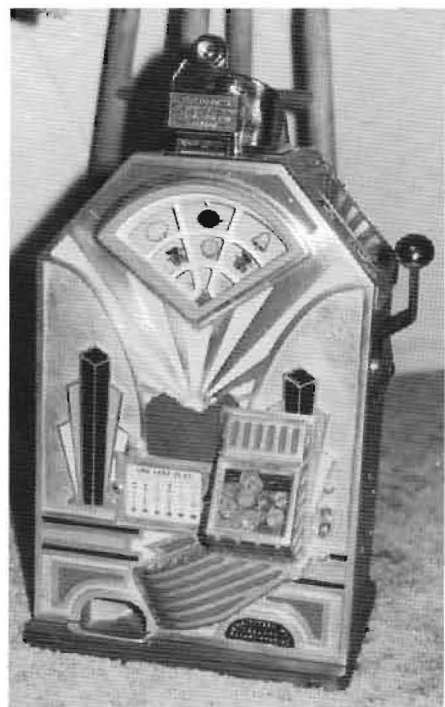
An early example of the **SELECTIVE LITTLE DUKE JACKPOT** is unique on two counts. The jackpot window is barred and the machine is 10¢ play, probably leading to the added jackpot protection. The extra cutout panel at the right still retains the single 1562771 patent number. Jeff Frahm Collection.



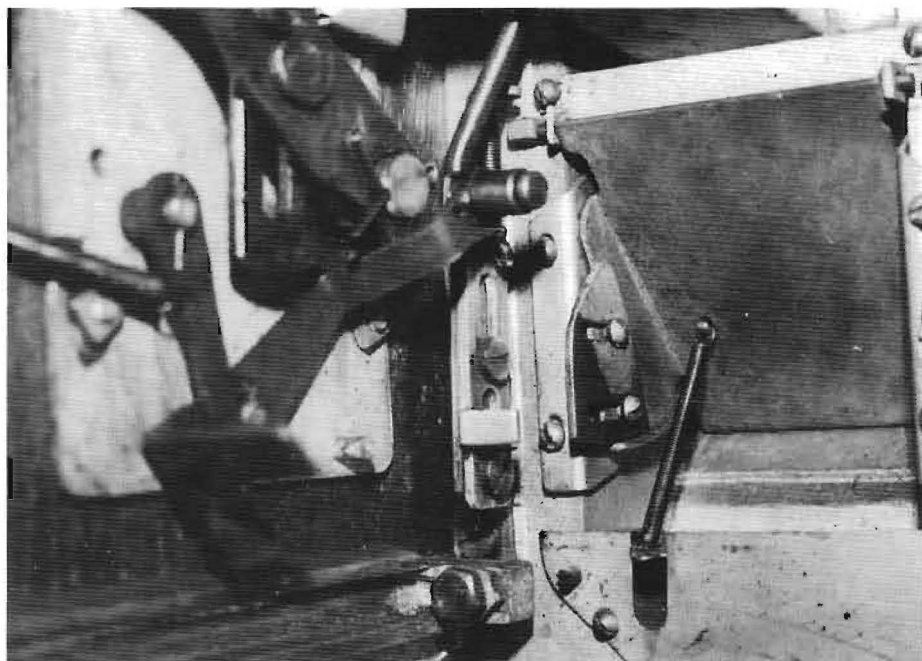
Close up of the "Dime Duke" award card notes **TEN CENT PLAY**. Higher coinage on the **LITTLE DUKE** is a rarity. Design has "Fat Deco" arrows in black with red and yellow wings. Machine serial is 3,754. Jeff Frahm Collection.



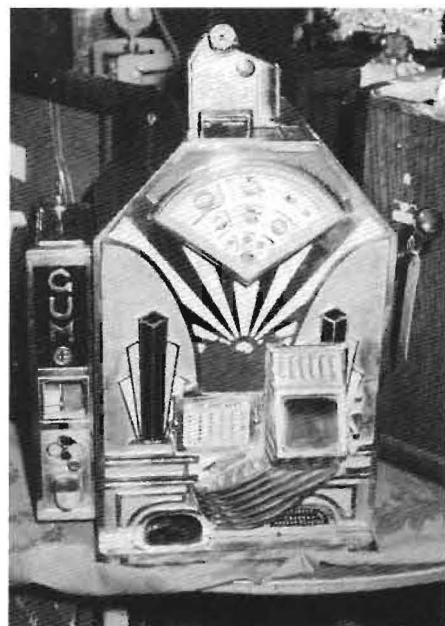
Inside look at the jackpot mechanism as locked with small emergency push knob at center behind pivoted jackpot release across center with dump roller at center right. A jackpot hit release locking bar, lower left, by slides. If jam or weight of coins prevents dump the push knob forces the system. Bob Klepner Collection.



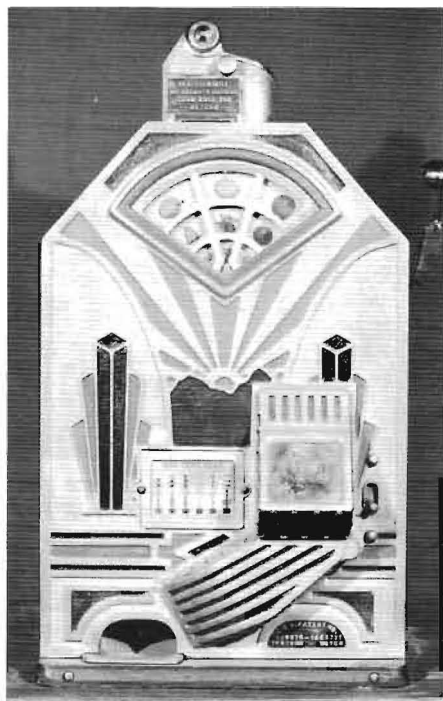
The common and highest volume production version of the **SELECTIVE LITTLE DUKE** is the 1¢ play **JACKPOT** model. This is machine serial number 5,808 that still utilizes the single patent number cutout panel. Copy on selective coin head says: "Bent coin will not operate machine. Turn knob for return." Small knob at right of jackpot was added early on for a full dump if the pot didn't completely empty. Later models didn't retain this feature. Hal O'Rourke Collection.



LITTLE DUKE jackpot after dumping shows pivoted jackpot release lifted. If it jams the knob release, seen as two slotted screw heads in a channel, push it up to dump. If the knob is pushed on a no winner combination the pins move but cannot trip pot unless locking bar is released by slides. Bob Klepner Collection.



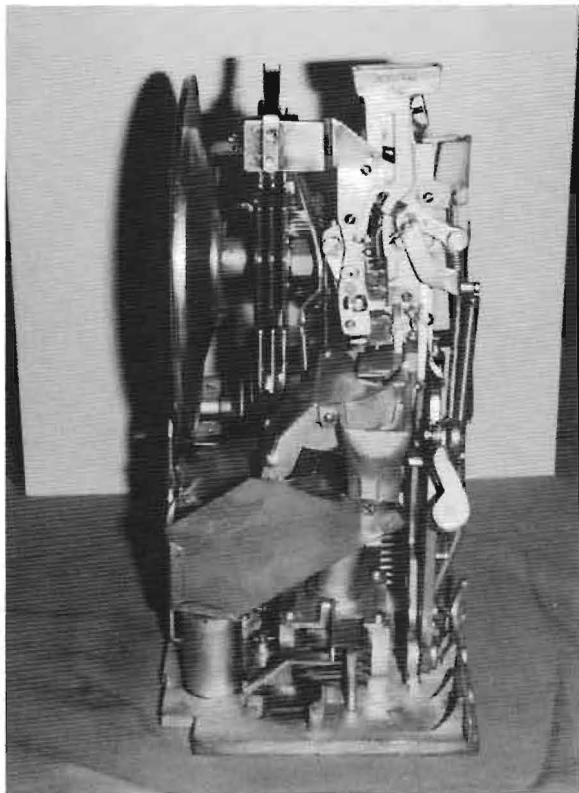
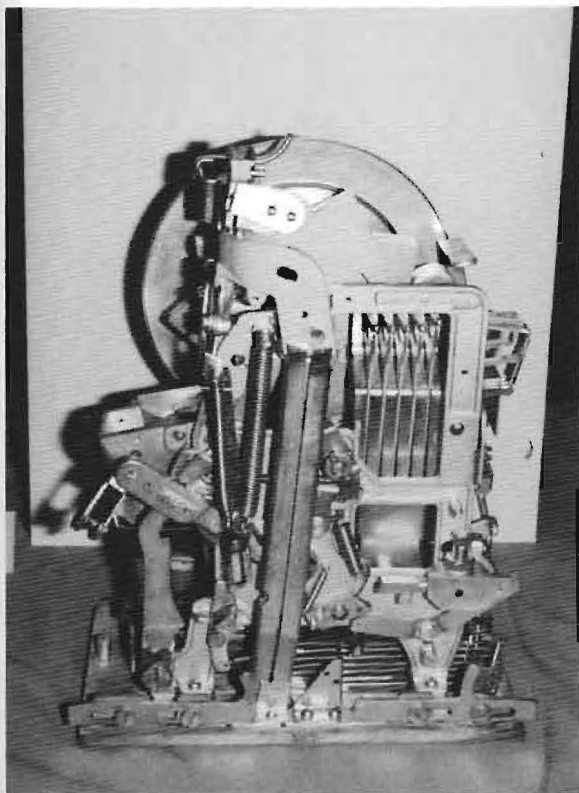
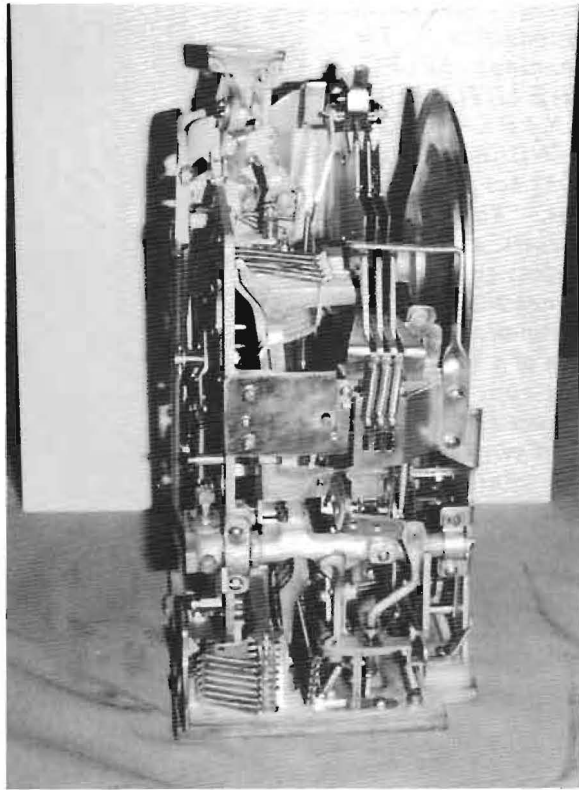
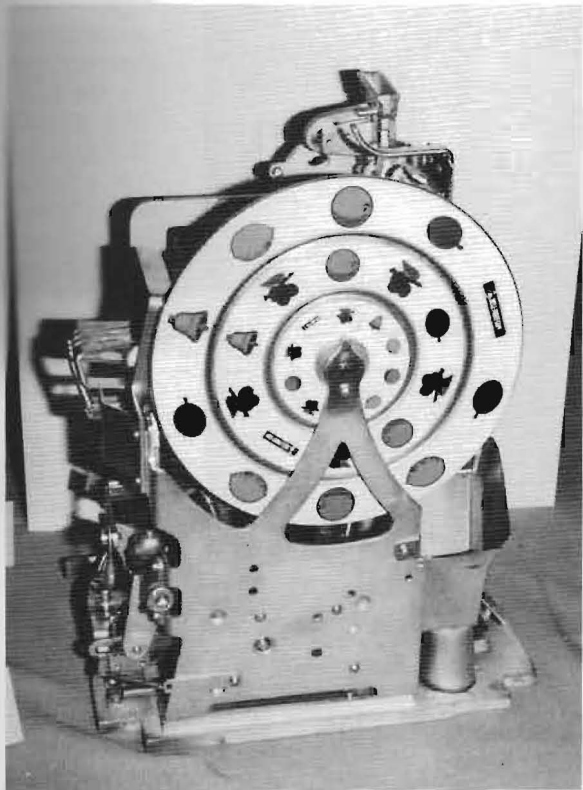
Jennings SELECTIVE LITTLE DUKE JACKPOT VENDER of February 1933 in penny play has full clear jackpot window, gumball side vender, selective coin head and single patent number cutout panel. This is the most standard model. Bill Harris Photography.



Left: The LITTLE DUKE hits its production stride with its selective coin head and a revised cutout panel to include four patent numbers: 1659878-1403933-1562771 and 90158. The first number is for the vender model, preventing play if the side vender is empty. The next two are for the original Harry Barson and later O.D. Jennings Switch track coin heads. The final number is for the new look Design Patent. Model still includes full jackpot dump knob, suggesting jackpot unreliability. Harrah's Museum Collection.

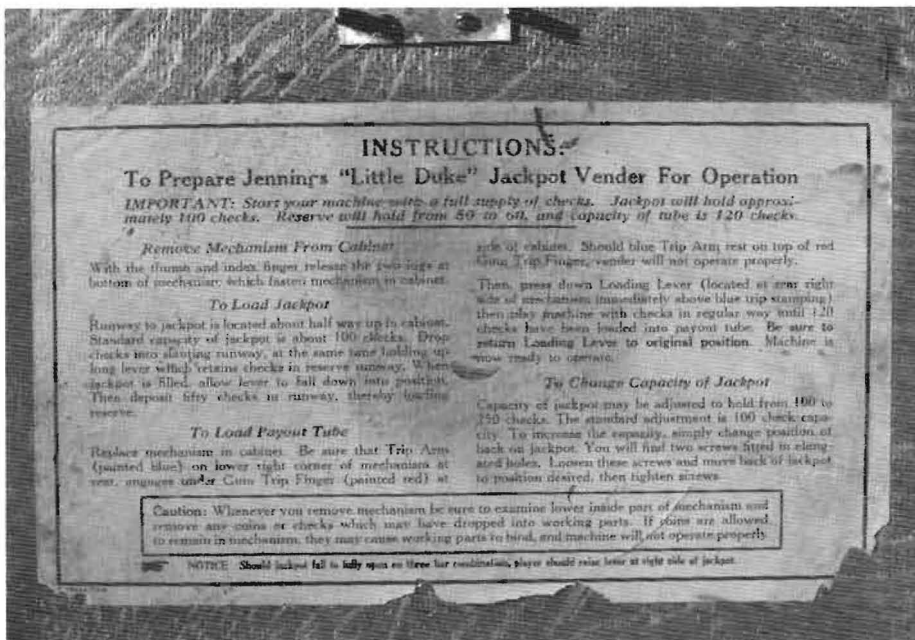


High volume production model of SELECTIVE LITTLE DUKE JACKPOT VENDER in "One Cent Play" has four patent cutout panel, gumball side vender, jackpot knob and selective coin head. Machine serial number is 12,011. Ken Fabian Collection.



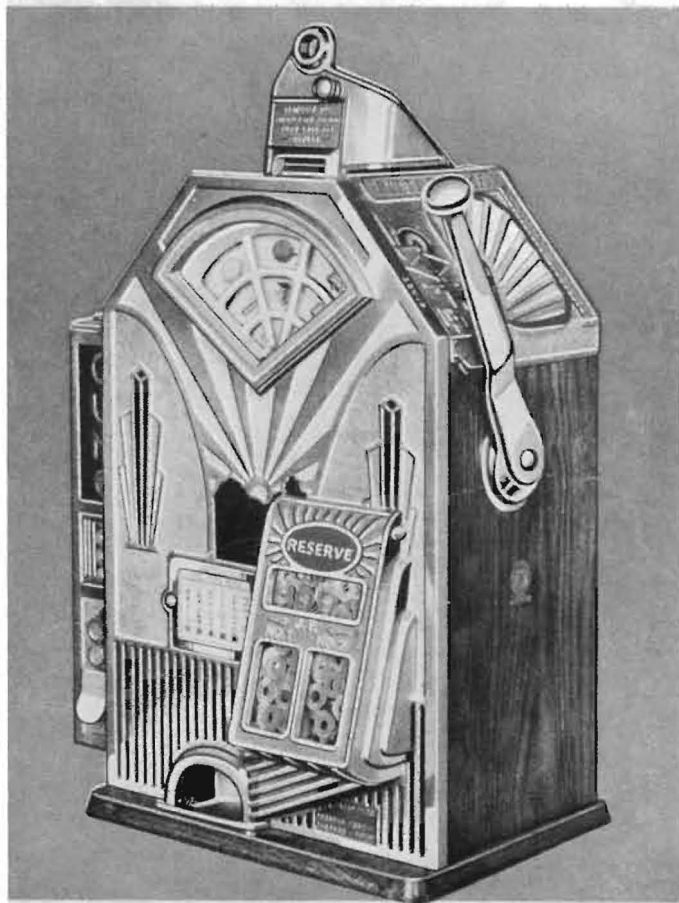
Restored LITTLE DUKE mechanism front, left side, back and right side shows how all of the machine features have been shoe-horned into a compact cabinet. Compare to later DUCHESS mechanism photos to see how a 90 degree turn created a Bell machine. This restoration was done by G.V. Corrie, Jim Ellis and Sam Kandel of Lombard, Illinois. Speakeasy Slots, Inc.

Below: New model introduction 1: The Jennings SELEC-TIVE LITTLE DUKE TRIPL - JACK VENDER of late 1933 has triple jackpot, "Thin Deco" arrows, and a four patent squared off panel that forever eliminates consideration of a second payout cup. The left payout cup has also been moved closer to the center to the machine. Gumball side vender, penny play. Note LITTLE DUKE name in bulls-eye top right casting. Author's Collection.



Left: The inside paper instructions for the LITTLE DUKE. This is paper "F-1586A VEN." from the original LITTLE DUKE JACKPOT VENDER MODEL D and its IMPROVED model, the most commonly used. Bill Whelan Collection.

"Operate Me . . .
and I'll Make More Money for You
Than You Ever Thought Possible!"



The Famous Jennings "Little Duke" Tripl-Jack Vender

Below: New model introduction 2: The Jennings SELEC-TIVE LITTLE DUKE TRIPL-JACK MINT VENDER of late 1933 was produced in limited numbers. Completely redesigned Tripl-Jack cabinet has "Thin Deco" design, with arrows much shorter than the "Fat Deco" models. Jackpot knob is also missing, indicating the reliability of the triple pot. Use of mint vender upped play to 5¢. Jesse McNeil, TIM Corporation.



THE JENNINGS "LITTLE DUKE"
TRIPLE JACKPOT VENDER

INSTRUCTIONS:

To Prepare Jennings "Little Duke" Jackpot Vender For Operation

IMPORTANT: Start your machine with a full supply of checks. Jackpot will hold approximately 100 checks, Reserve will hold from 50 to 60, and capacity of tube is 90 checks.

Remove Mechanism From Cabinet

With the thumb and index finger release the two lugs at bottom of mechanism which fasten mechanism in cabinet.

To Load Jackpot

Runway to Jackpot is located about half way up in cabinet. Standard capacity of jackpot is about 100 checks. Drop checks into slanting runway, at the same time holding up long lever which retains checks in reserve runway. When jackpot is filled, allow lever to fall down into position. Then deposit fifty checks in runway, thereby loading reserve.

To Load Payout Tube

Replace mechanism in cabinet. Be sure that Trip Arm (painted blue) on lower right corner of mechanism at rear, engages **under** Gum Trip Finger (painted red) at

side of cabinet. Should blue Trip Arm rest on top of red Gum Trip Finger, vender will not operate properly.

Then, press down Loading Lever (located at rear right side of mechanism immediately above blue trip stamping) then play machine with checks in regular way until ninety checks have been loaded into payout tube. **Be sure to return Loading Lever to original position.** Machine is now ready to operate.

Change Capacity of Cabinet

Capacity of jackpot may be adjusted to hold from 100 to 250 checks. The standard adjustment is 100 check capacity. To increase the capacity, simply change position of back on jackpot. You will find two screws fitted in elongated holes. Loosen these screws and move back of jackpot to position desired, then tighten screws.

Caution: Whenever you remove mechanism be sure to examine lower inside part of mechanism and remove any coins or checks which may have dropped into working parts. If coins are allowed to remain in mechanism, they may cause working parts to bind, and machine will not operate properly.

→ NOTICE: Should jackpot fall to fully open on three bar combination, player should raise lever at right side of jackpot. ←

Back door instructions sheet from an IMPROVED LITTLE DUKE JACKPOT VENDER MODEL D is coded F-1586A. These instruction sheets were printed on yellow stock and glued inside the back panel. Bill Whelan Collection.



The small coin head was a viable model to the end, another of the many models of the Tripl-Jack. This is the LITTLE DUKE TRIPL-JACK VENDER, five cent play, as a gumball vender. Serial is 15,464. Fred Marshall Collection.



The many models of the Tripl-Jack: Another LITTLE DUKE TRIPL-JACK VENDER with the small coin chute, this one in 1¢ play as a gumball vender. Serial is in the 16,000 range. Tom Adams Collection.



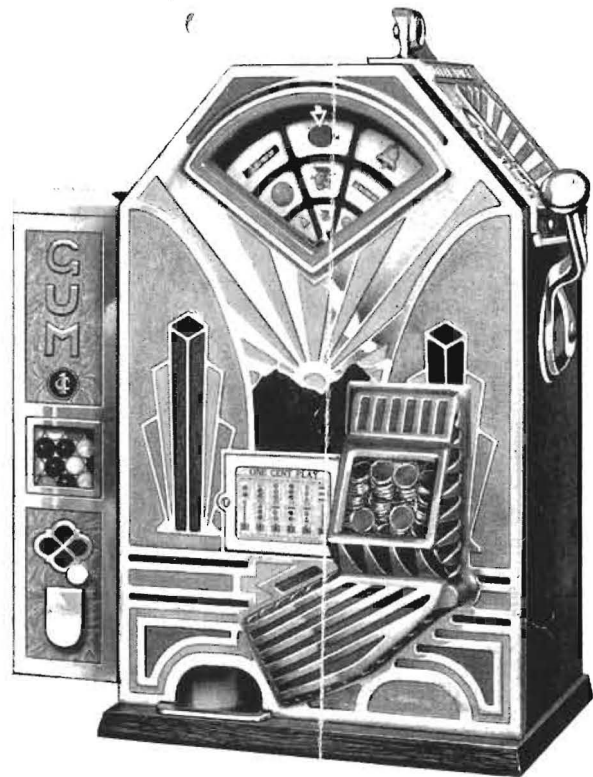
The many models of the Tripl-Jack: The same model *SELECTIVE LITTLE DUKE TRIPL-JACK* in 1¢ play. Serial on this machine is 15,095. Kevin Hammerbeck Collection.



The top of the line for the Tripl-Jack: *SELECTIVE LITTLE DUKE TRIPL-JACK VENDER*, the penny play model. The much larger and almost centered payout cup commands the attention. Gil Shapiro/Urban Archaeology.

JENNINGS "LITTLE DUKE"

"It's the Niftiest Machine You Ever Saw"



"LITTLE DUKE" JACKPOT VENDER
CODE NAME: DOVEN

MADE IN 1c—5c—10c PLAY

WITH OR WITHOUT VENDER

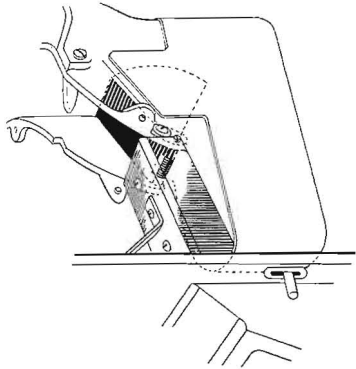
ALSO AVAILABLE WITHOUT JACKPOT IF DESIRED

"LITTLE DUKE" PRESENTS AN ATTRACTIVE APPEAR-
ANCE TO THE PLAYERS . . .

SIMPLICITY and DEPENDABILITY Are Assured

The Improved "Little Duke" Now Has a Marvelously Simple Jackpot Feed

It is with considerable pride that we now announce the Improved Jackpot Feed. Experienced operators will recognize the simplicity and practicality of this new feature. The jackpot is fed from the overflow of the check tube. Naturally there is no worry about tube "running dry." The tube must be filled before coins (or checks) go to jackpot. When both jackpot and tube are filled checks (or coins) automatically divert to cash box. No complicated working parts—the operation is simple and fool-proof.

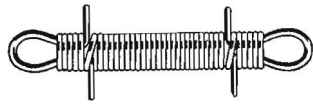


Large Capacity Tube and Reserve

The capacity of check tube is 115 coins (or checks) assuring an ample supply at all times, eliminating the annoyance of tube "running dry." In addition to this assurance, the large reserve together with dependable jackpot feed assures full supply of checks (or coins) for the jackpot.

Special consideration has been given to the springs on the Improved "Little Duke." To assure the proper type of spring, each unit has been carefully checked to determine the correct tension. Only the best grade of music wire is used in manufacturing Jennings springs. Most of the springs are now equipped with "eyelets" which allow more even tension and prevent breaking.

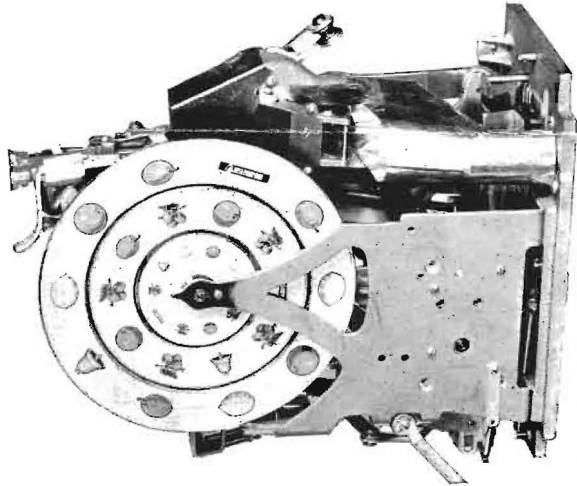
Every little detail part has been given careful attention to assure maximum performance.



NOTE THE COMPACT MECHANISM AND

YOU'LL MARVEL
AND COMPACT
THE IMPROVED

EVERY PART IS
FITTED TO A
PERFORMANCE



FRONT VIEW OF "LITTLE DUKE" MECHANISM

ALL THE FEATURES
SELLING FOR THE
● ADJUSTABLE JACKPOT
● LARGE RESERVE
● AUTOMATIC 2 TUBES
● BULLS EYE COIN
● NO PAY ON CHECKS
● LARGE CAPACITY
● SMOOTH AND EASY
Plus 101 Important

A TRIUMPH IN SIMPLICITY AND

Just think of it, the "Little Duke" will do everything its big brother, the Jackpot Vender, can do, yet it has about 40 per cent less parts. The mechanism may be quickly removed from cabinet by releasing two snaps. No screws or wing nuts to bother with. When you see the mechanism you'll marvel at its compactness and simplicity!

The operation is the same as the large Jackpot Bells. It has an automatic payout, delivering from 2 to 20 coins (or checks) on certain combinations. It has a jackpot and reserve feature. The jackpot may be adjusted to hold from 100 to 250 coins (or checks). The reserve holds about 60 coins (or checks). After jackpot empties, the coins (or checks) in the reserve drop into jackpot on next play, and the play goes on without interruption. The Improved Jackpot Feed automatically keeps the jackpot and reserve filled. Cash box capacity is 2500 pennies. (1400 nickels.)

Such important improvements as Return Coin, Split Coin Chute, New Payout Slide Assembly, Anti-Bumping and Anti-Cheating Devices, Slug Re-

The IMPROVED "LITTLE DUKE" Has Established New Standard

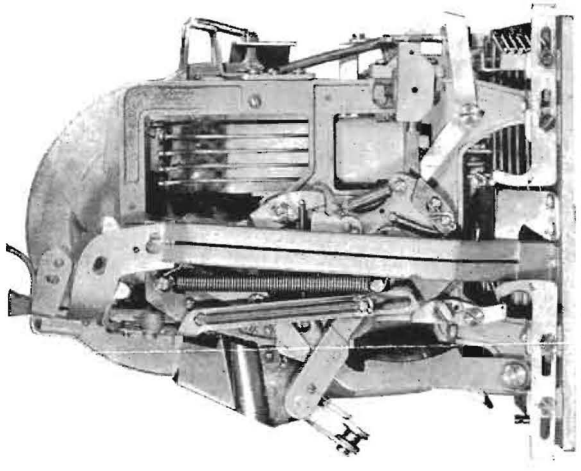
Improved in the IMPROVED "LITTLE DUKE"

AND THE STURDILY BUILT WORKING PARTS

... AT THE SIMPLE MECHANISM OF "LITTLE DUKE"

... IS CAREFULLY ASSURED PERFECT AND LONG WEAR

... OF MACHINES TWICE AS MUCH JACKPOT
 ... 20 PAYOUT DETECTOR CHECK DEVICE CASH BOX EASY OPERATION
 ... nt Improvements



REAR VIEW OF "LITTLE DUKE" MECHANISM

MECHANICAL CONSTRUCTION

jector, etc., are standard equipment. The "Little Duke" weighs 50 pounds, about half the weight of the standard jackpot machine.

THE "LITTLE DUKE" IS MADE IN 4 MODELS

(Be Sure to Specify Model You Desire)

Model	Price
Model "A" Without Vender or Jackpot	1c Play \$70.00
Model "B" With Vender but no Jackpot	75.00
Model "C" Without Vender but with Jackpot	75.00
Model "D" With Vender and Jackpot	80.00

F.O.B. Chicago—Federal Excise Tax Included

OPERATORS' QUANTITY PRICES ON APPLICATION

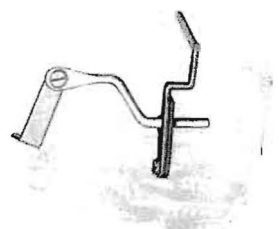
It's marvelous—remarkable—a real profit maker! So get going with "Little Duke" at once. Order your sample today on our Ten Days Money Back Guarantee.

"Little Duke" Must Make Good, or Jennings Will

You'll Be Interested in These Important Improvements on the New "Little Dukes"

NEW TIMING ARRANGEMENT

Proper timing of an automatic payout machine is one of the important requisites. The speed of the discs; the positive stopping of each individual disc in proper time; the smooth, free action of the timing mechanism, all make for mechanical perfection and precision. The accompanying illustration shows an important improvement in the timing arrangement of the Improved "Little Duke."



The principle employed in this device is similar to that in use on the "L. B." machines for quite some time. Naturally the operators are familiar with this feature, and understand the adjustments. You'll find this new "fourth click" arrangement more simple in operation.

Another feature of improved construction is the new "hub assembly" of the discs. The hubs are of one unit, with reels riveted to the hub. This method of construction eliminates any possibility of discs becoming loose and getting out of alignment.

A Word About The Improved Coin Slot

Mutilated and bent coins are responsible for the majority of out-of-order calls on any coin-operated devices, especially on an automatic payout machine. The Improved Coin Slot on the "Little Duke" prevents bent or mutilated coins entering the mechanism thereby eliminating the greatest cause of out-of-orders. This feature, combined with the many other improvements makes the Improved "Little Duke" unquestionably "the greatest money-maker ever designed."

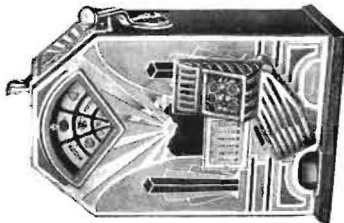
Standards in Coin-Machine Design -- It's a Jennings' Construction

NOW -- The Improved "Little Duke"

Since its introduction, just a few months ago, the "Little Duke" has been accepted by the majority of coin-machine operators and users as the greatest achievement in the history of the industry. No other coin-operated device has ever received such wide-spread and whole-hearted reception. The popularity of the "Little Duke" has spread like wildfire. You'll find this sensational little money-maker in every state in the Union, as well as in practically every country throughout the world.

We anticipated an active response to the original announcement of the "Little Duke," considering its exceptional features. However, the overwhelming demand took us, we must admit, quite by surprise. Our production facilities have been taxed to the limit to supply the great volume of orders. Customers immediately recognized the possibilities of using "Little Dukes" in dormant territory if we could furnish machines with added features, such as vending mechanism, nickel or dime play, etc.

In making changes to meet these demands we incorporated new improvements and special features. No expense was spared to furnish better machines with improvements that would assure more dependable operation with increased earning capacity. The result is the Improved "Little Duke."



"LITTLE DUKE"
WITHOUT VENDER
Code Name: DOREX

Let's Take A Look at the Mechanism

Here's What Well-known Operators Say About The "Little Duke"

JUST A PENNY GOLD MINE

"You ask about a word or two about the 'Little Dukes' I recently bought, so here goes—just a penny Gold Mine. Took in \$26.00 first five days."
(Signed) P. S. Fishbaugh, Ohio.

WORKING PERFECTLY

"The 'Little Duke' is working perfectly, and taking in quite a bit of money. We notice in one of your circulars, you state the machines will average \$5.00 per week. We are now operating two 'Dukes' and averaging better than three times that."

Kindly ship one more of your Dukes by Universal Carloading. If we find that over a period of a few weeks, the machine does nearly as well as in the past, you shall receive an order for at least ten more.
Thanking you for all favors, we are,
(Signed) James Busch,
SUPREME VENDING CO., R. I.

\$93.36 IN SIX DAYS

It might interest you to know that the first "Little Duke" that I got grossed \$93.36 in six days, the best daily gross being \$20.21 with a payoff of seven jackpots.
(Signed) C. Shepherd (Florida).

OVER \$10.00 IN 2½ DAYS

In regard to the "Little Duke" machine, it is working perfectly and there is nothing like it. First two and one-half days of operation it has taken in over \$10.00. This was in a location in a town of only one thousand people.
(Signed) Carl E. Seneff (Indiana).

\$8.00 IN 2½ DAYS

In two and one-half days my sample "Little Duke" has taken in over \$8.00 for me. Am satisfied 100%.
(Signed) John Speck (Illinois)

600 PENNIES THE FIRST NIGHT

I have received my five "Little Duke" Venders and they look pretty good to me. One of them took in six hundred pennies the first night.
(Signed) J. Winfield Gaffney (Connecticut)

\$33.00 IN EIGHT DAYS

We have had your "Little Duke" machine in operation eight days. It has taken in \$33.00.
(Signed) Independent Novelty Co.,
Max Gingold (Illinois).

AVERAGE \$15.00 PER WEEK

I am very much sold on the "Little Duke" machine. Mine are doing better each week and I am not having any trouble. The three machines I have averaged \$15.00 each last week. Not a bad report because they are steady locations.
(Signed) H. F. Johnson (Illinois).

MOST COMPACT AND BEST MONEY-MAKING PENNY MACHINE EVER DESIGNED

I take this occasion in writing you concerning the "Little Duke" machine that I bought from you a month ago. I put this machine out as soon as I received it, and it is with the greatest pleasure that I recommend it. I have had considerable experience in the use and handling of vending machines, and I have used various makes and types of penny vending machines, but this machine that I purchased from you far surpasses any of the rest in service, design and its money-making qualities. There is something indefinable about it that acts as a magnet, and it is a source of much pleasure to all who play it.

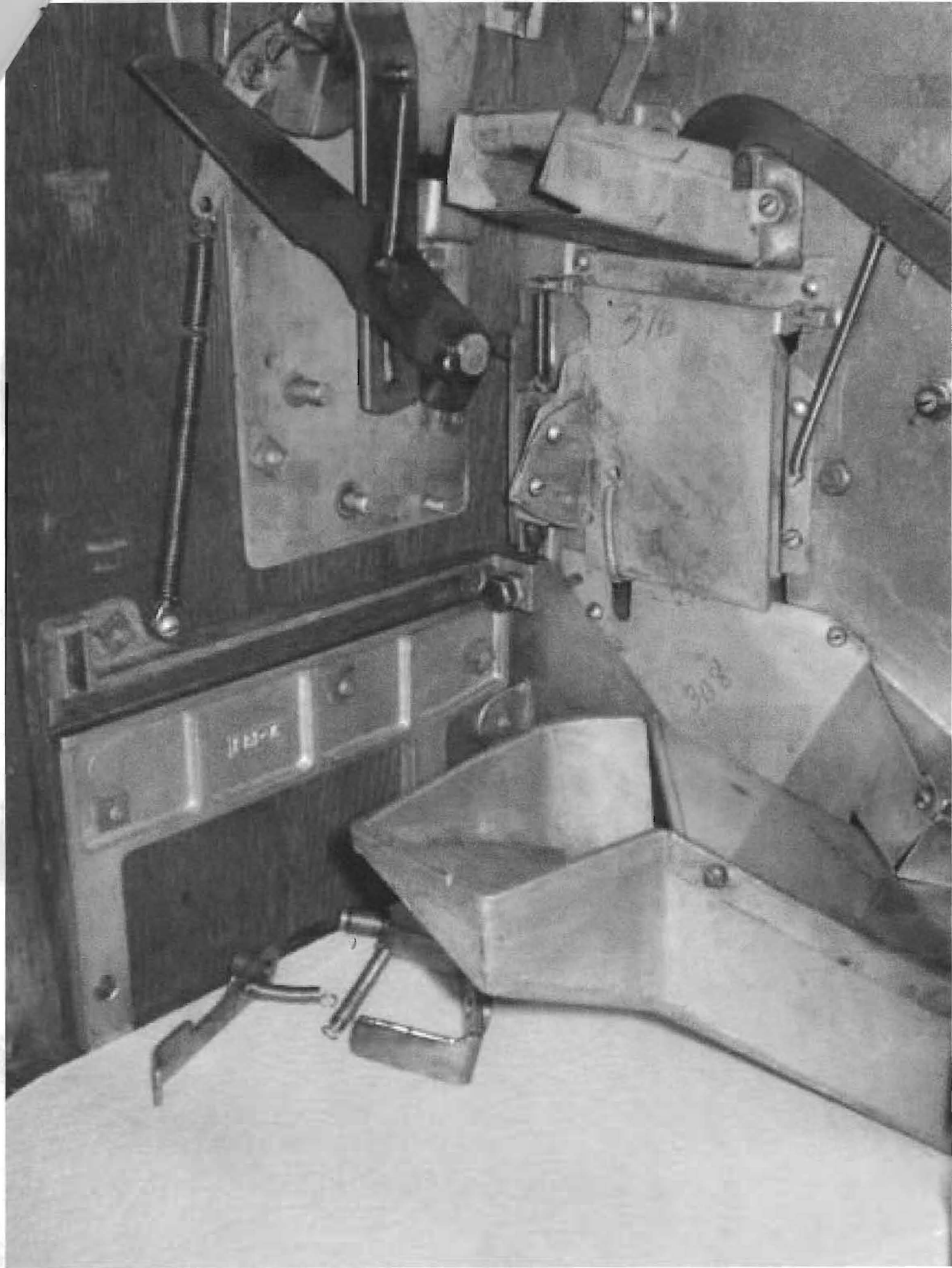
I can truthfully say that with 10 years experience in all types of machines, that this "Little Duke" machine is the most compact and best money-making penny machine ever designed. It averages eighteen (\$18.00) dollars gross weekly.
(Signed) A. Arafotis (Georgia).

APPEALING TO THE EYE OF PLAYERS

With reference to the two "Little Dukes" I bought, I must say the "Little Duke" is a "beaut" from all standpoints, and you are to be congratulated highly for giving the operators a penny machine of this type during these depressive times.

Of all the penny machines now in the field, there isn't one that can compare in any way with the "Little Duke." In appearance the "Little Duke" is appealing to the eye of the players, and by operating on the same plan as the five and twenty-five cent play machines it is very fascinating. In six days' play one "Little Duke" totaled \$25.80.

Will also state in the locations where I have larger machines, have found this Little Duke does not interfere with the play on the larger machines.
(Signed) Leo F. Kirsch (Kansas).





7 / 1 / 2010



Antique
Slot Machine
Parts
Catalog



920 622 5959

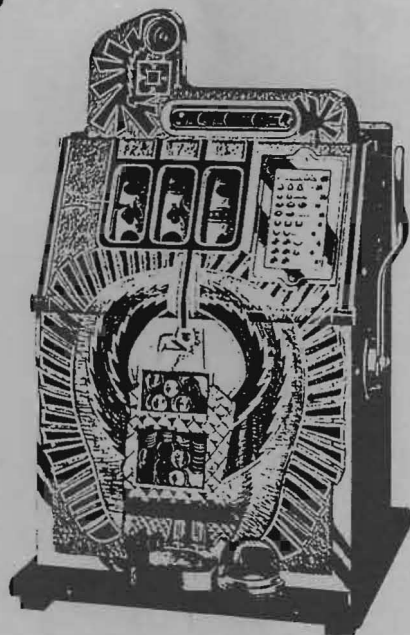
Antique Slot Machine Part Co

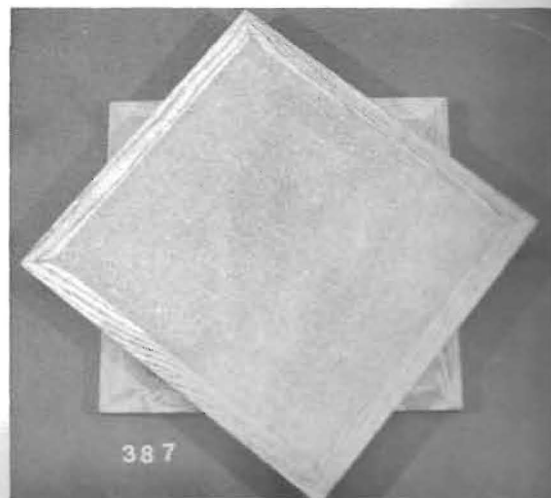
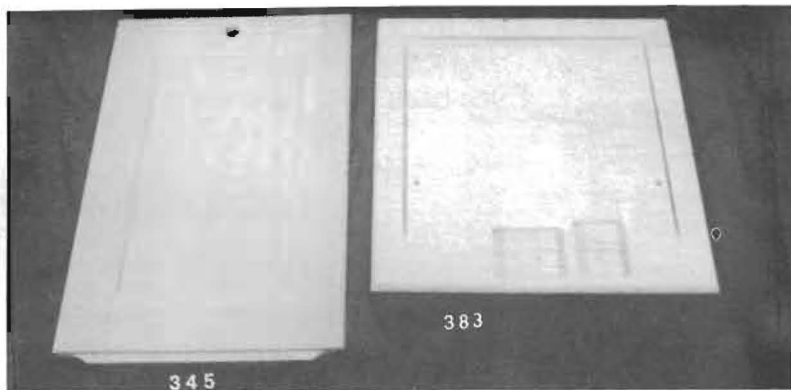
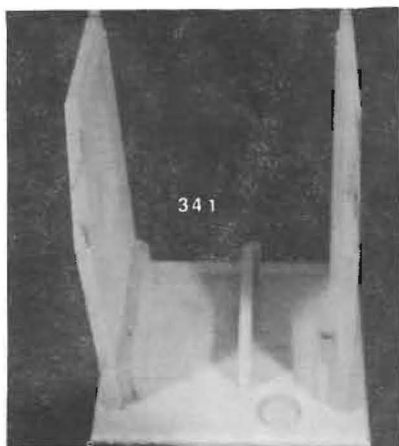
~~██████████~~ Av

~~██████████~~ Wisconsin 53100

~~██████████~~ 476

~~██████████~~ Fax





BACK DOORS

- 209 - Vest Pocket
- 331 - Mills original
- 332 - Jennings original
- 333 - Mills - uses original lock or repro. Mills lock
- 334 - Jennings
- 335 - Watling
- 336 - Q.T.
- 337 - Caille
- 338 - Jennings Duchess
- 339 - Pace Bantam
- 345 - Early Mills wooden door
- 347 - Little Duke wooden door
- 348 - Mills - uses cam lock
- 349 - Mills FOK - uses original Mills lock
- 350 - Mills FOK - uses cam lock
- 351 - Pace

CABINET HARDWARE

- 136 - Mills left hood latch
- 137 - Mills right hood latch
- 138 - Mills mechanism hold down bracket - left side
- 139 - Mills mechanism hold down bracket - right side
- 359 - Mills mechanism clamp retainer
- 360 - Early Jennings mechanism latch - left
- 361 - Early Jennings mechanism latch - right
- 362 - Jennings hood latch - left
- 363 - Jennings hood latch - right
- 364 - Mills cabinet side top guard
- 365 - Hi-Top front casting mounting bracket
- 366 - Carriage bolts - chrome plated

HAMM-R

- 367 - Blue
- 368 - Not available
- 369 - Charcoal Grey
- 370 - Silver
- 371 - Not Available
- 372 - Green

PAINT

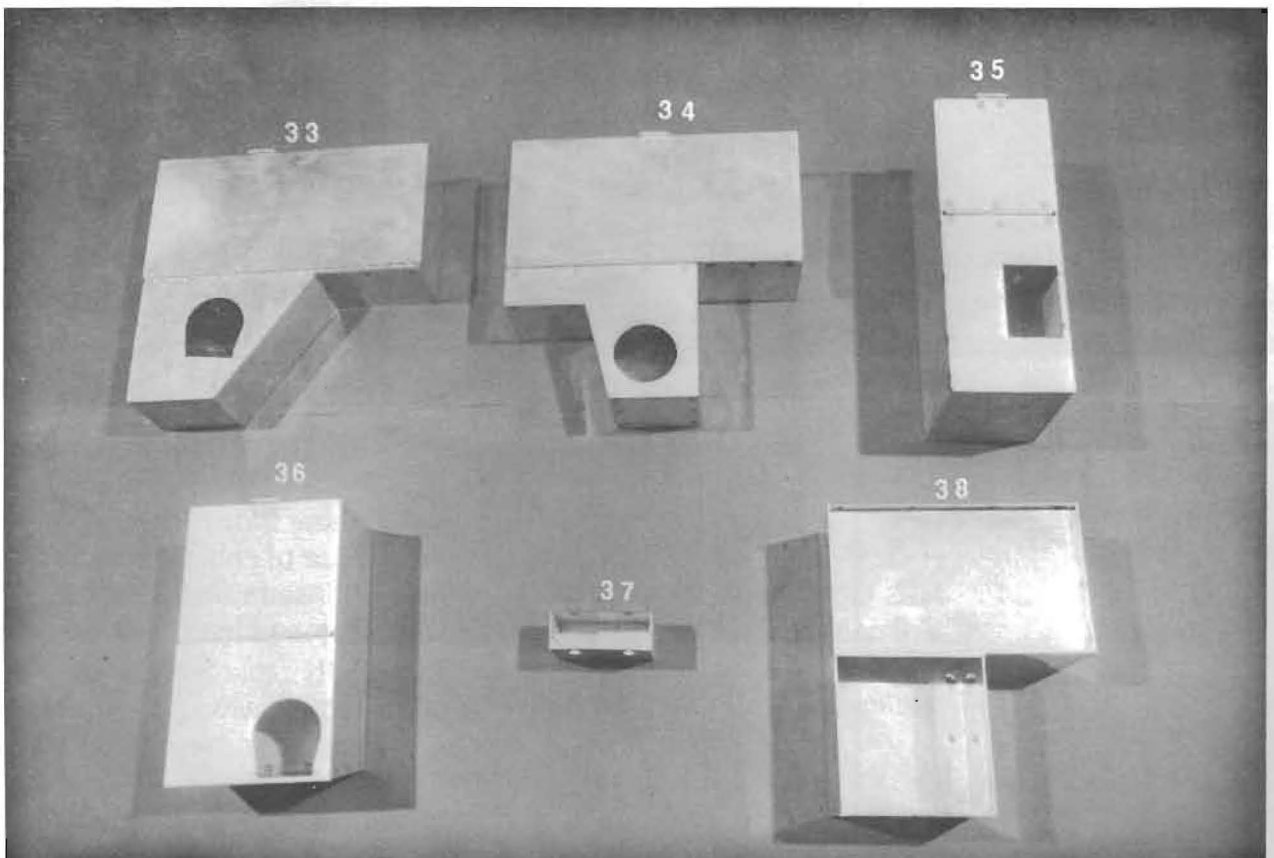
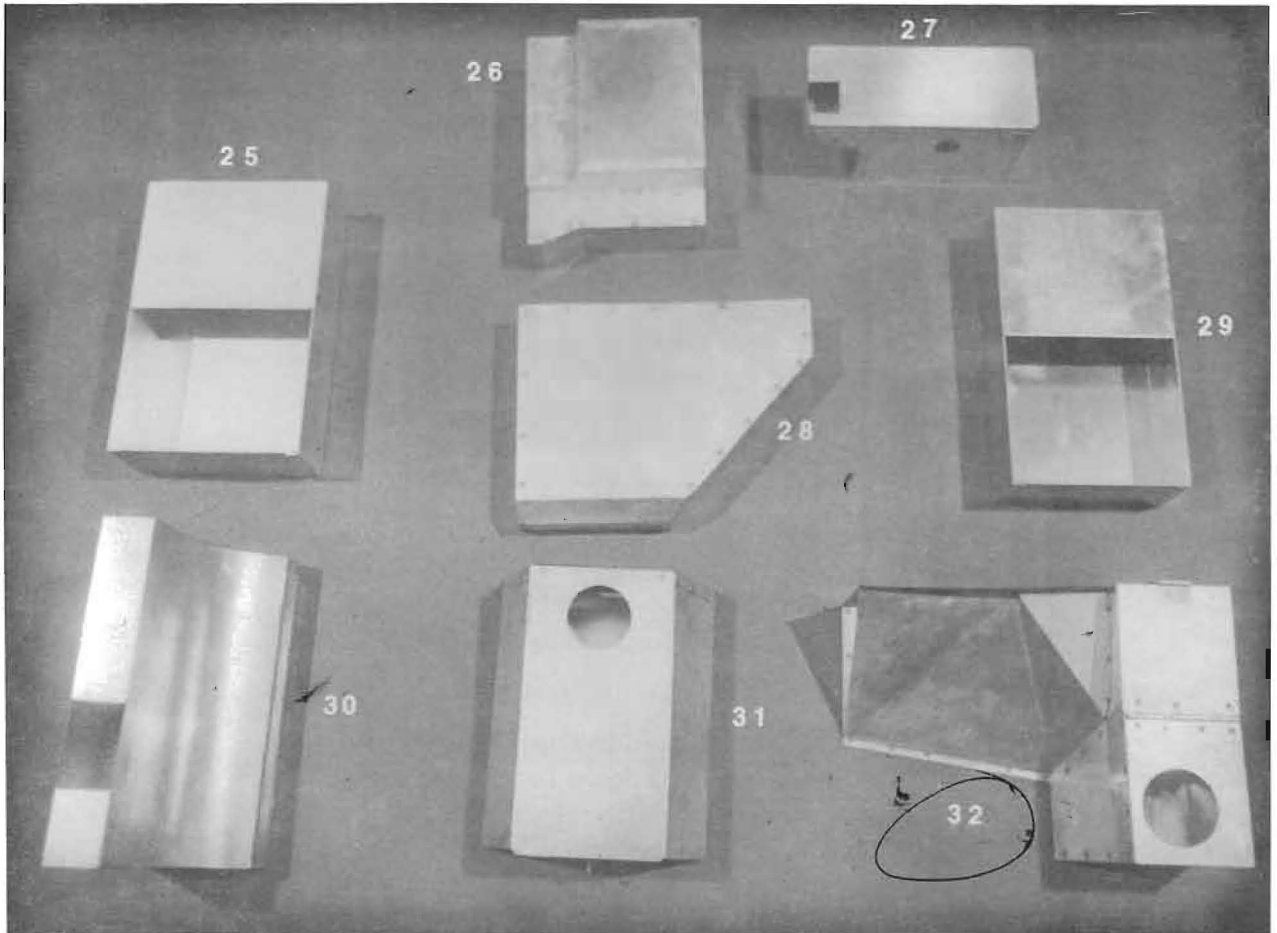
- 373 - British Brown
- 374 - Celestial Blue
- 375 - French Grey
- 376 - Not Available
- 377 - Not Available
- 378 - Not Available

WRINKLE FINISH

- 379 - Not Available
- 380 - Not Available
- 381 - Jet Black
- 382 - Not Available

CABINETS

- 340 - Black Cherry
 - 341 - War Eagle
 - 342 - Blue Front
 - 343 - Hi-Top
 - 344 - Mills Gooseneck
- All cabinets are solid oak and unfinished. Cabinets in other styles are available on request.*
- 352 - Mills back door instruction sheet
 - 353 - Watling back door instruction sheet (*not pictured*)
 - 383 - Base of cabinet-specify machine
 - 384 - Poinsetta Style Stencil
 - 385 - Roman Head Style Stencil
 - 386 - FOK Style Stencil
 - 387 - Wood swivel base-great for turning your machine to adjust or play it.



CASHBOXES

25 - Mills

26 - Columbia

27 - Vest Pocket

28 - Columbia

29 - Watling

30 - Upright

31 - Caille

32 - Little Duke

33 - Jennings Peacock

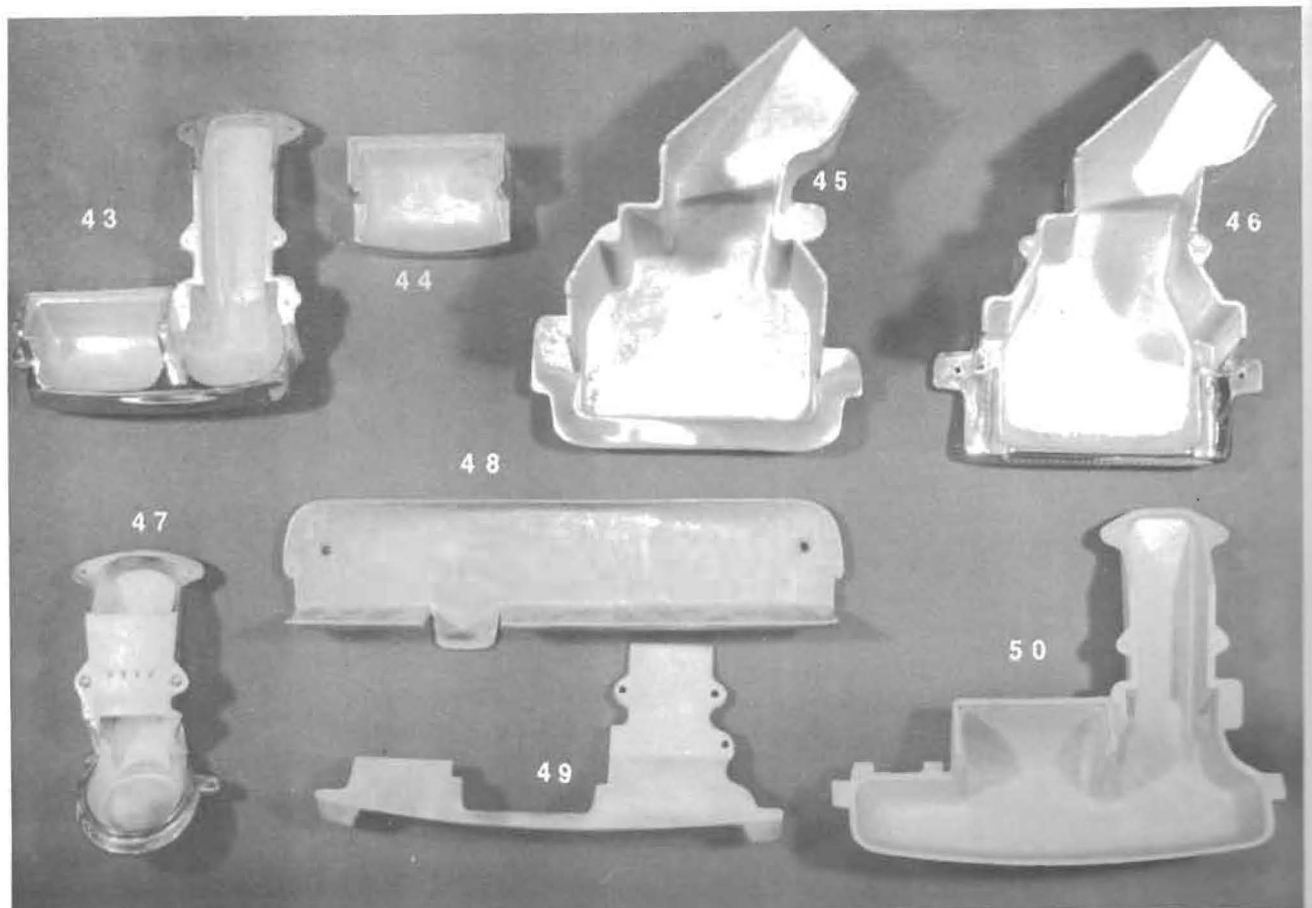
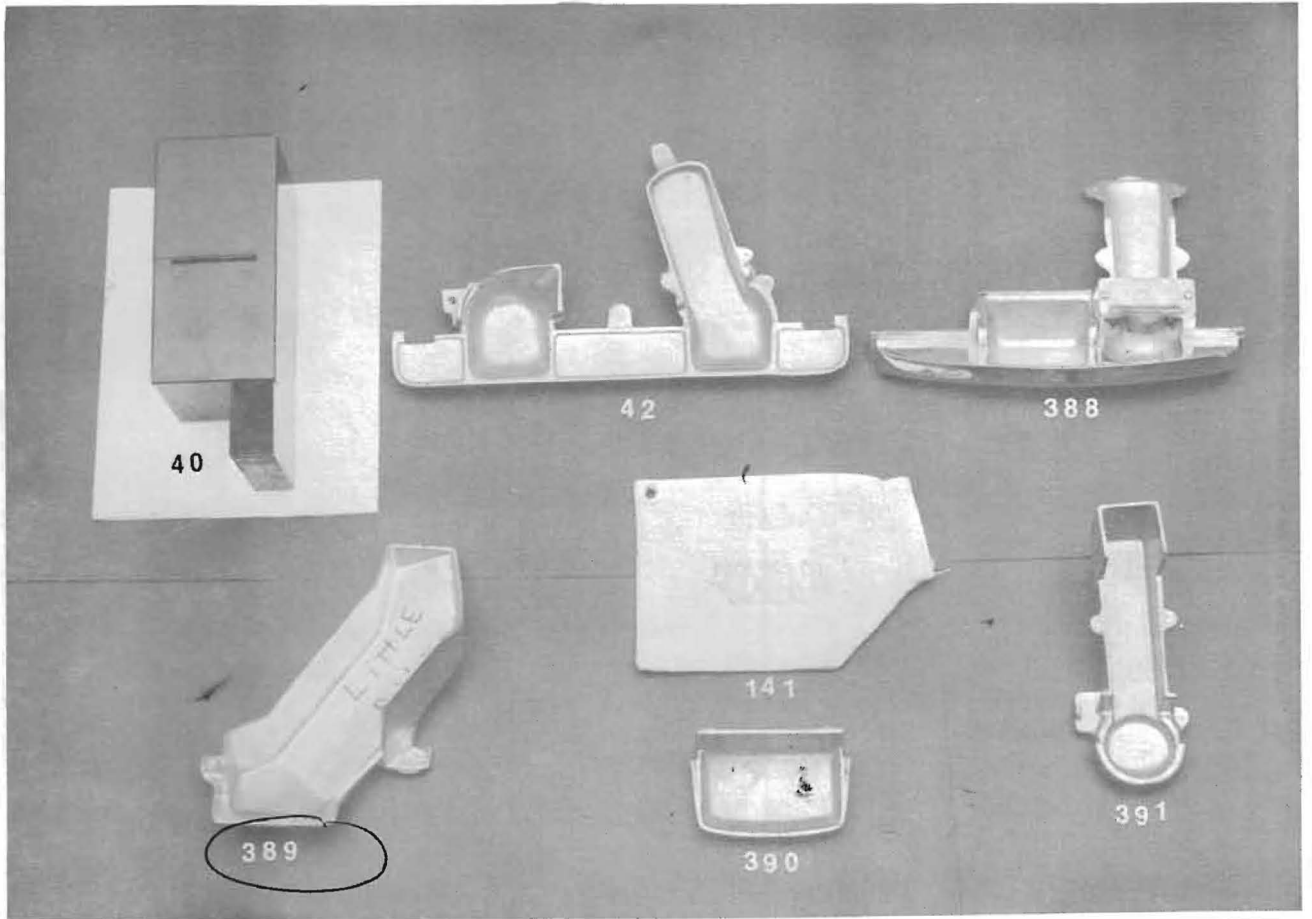
34 - Jennings Gooseneck

35 - Jennings Duchess

36 - Jennings Today Vendor

37 - Escalator overflow cup (slug cup)

38 - Jennings Standard Chief



CASHBOXES

39 - Buckley (*not pictured*)

40 - Baby Watling

MONEY BOWLS (CHROMED)

42 - Baby Watling

43 - Black Cherry

44 - War Eagle - for jackpot
Blue Front
Castle Front
Bursting Cherry

45 - Jennings Standard Chief

46 - Jennings Sun Chief

47 - Mills Gooseneck
Bursting Cherry
Blue Front
War Eagle
Castle Front

48 - Watling money tray

49 - Money top trim for Hi-Top

50 - Hi-Top
Silver Palace

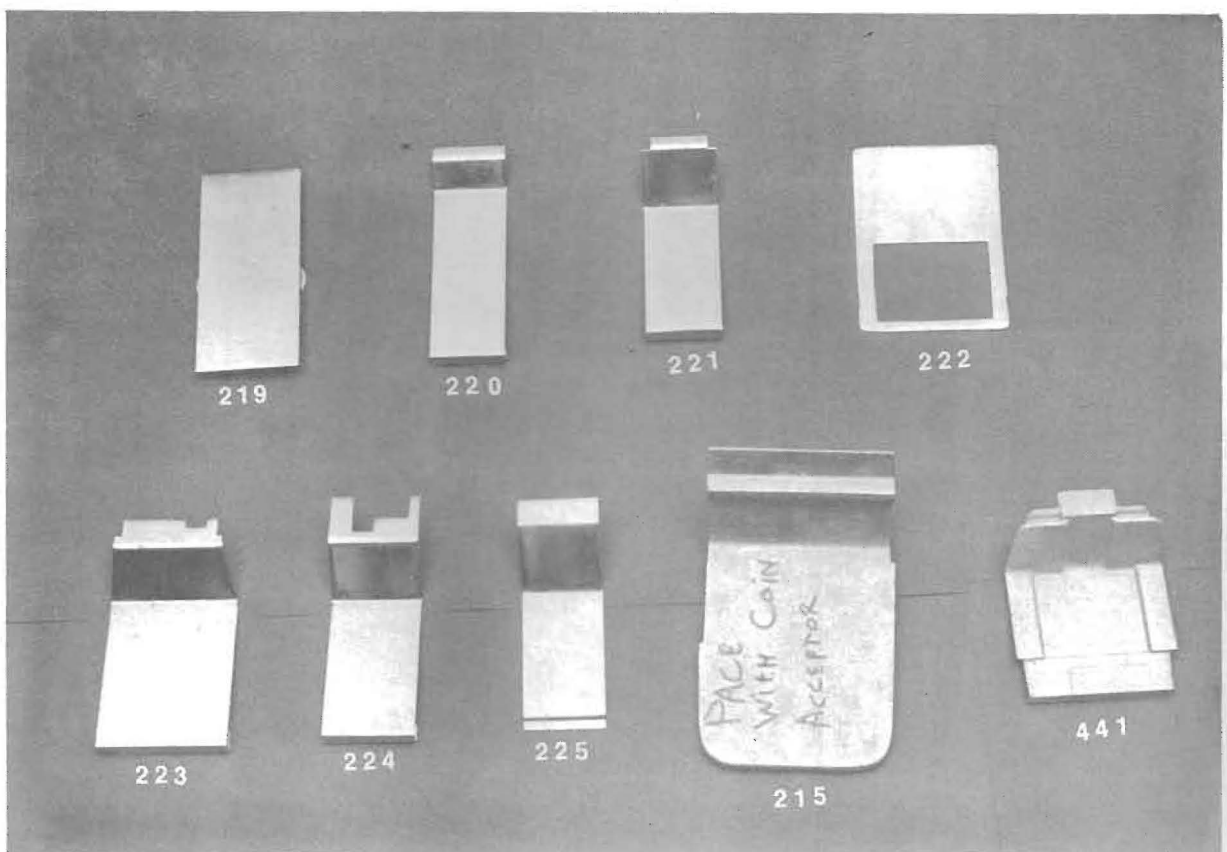
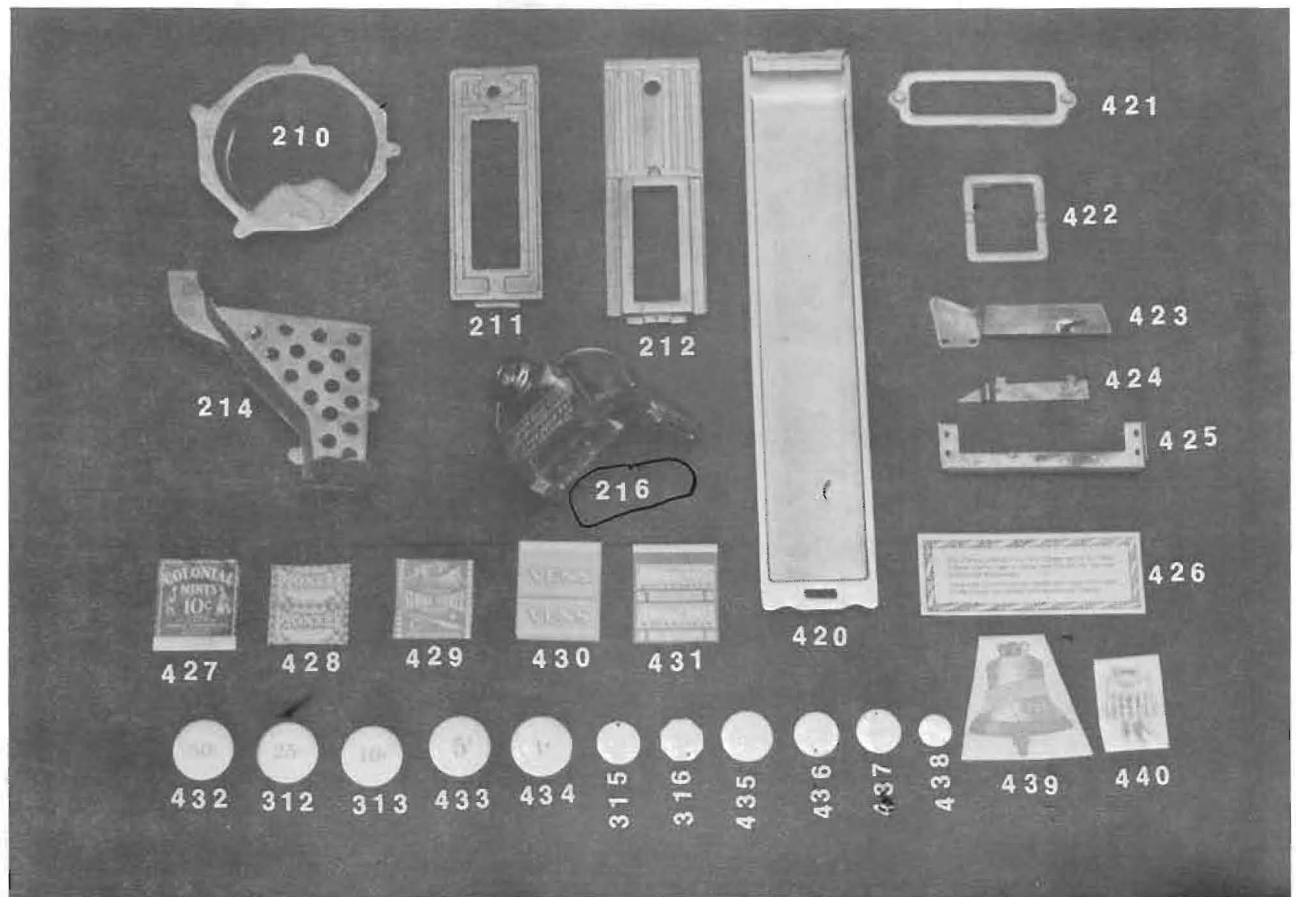
141 - Pace money bag

388 - Extrabelle

389 - Little Duke

390 - Q.T. jackpot cup

391 - Q.T. money bowl



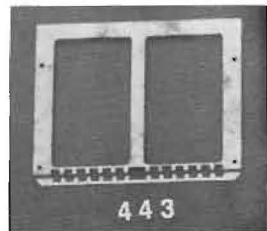
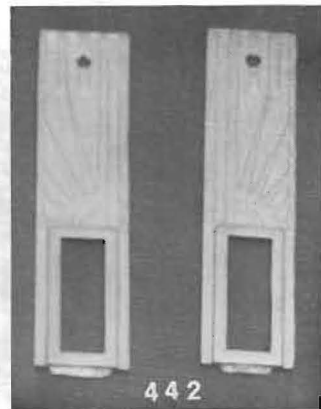
MISCELLANEOUS



- 210 - Rol-A-Top glass frame holder
- 211 - Watling mint vendor door
- 212 - Jennings mint vendor door
- 214 - Watling money funnel
- 216 - Little Duke coin head
- 222 - Jackpot plate
- 312 - Watling Rol-A-Top denominator badge - 25¢
- 313 - Watling Rol-A-Top denominator badge - 10¢
- 315 - Watling Gold Seal Award token - brass plated
- 316 - Mills octagon "777" Award token - brass plated
- 420 - Side vendor back door - unplated
- 421 - Jennings award card frame
- 422 - Pace award card frame
- 423 - Q.T. jackpot loading chute
- 424 - Q.T. jackpot divider
- 425 - Q.T. jackpot lower coverplate
- 426 - Marquee award card 2-1/2 x 6-1/2
- 427 - Colonial Mint wrapper
- 428 - Pioneer Mint wrapper
- 429 - Strike Three Mint wrapper
- 430 - Vens Mint wrapper (blue,green,red)
- 431 - Wintergeeen Mint wrapper
- 432 - Rol-A-Top denominator badge - 50¢
- 433 - Rol-A-Top denominator badge - 5¢
- 434 - Rol-A-Top denominator badge - 1¢
- 435 - Superior Gold Award token - horse pictured
- 436 - Mills Gold Award token - pitcher pictured
- 437 - Prosperity Award token
- 438 - Small trade stimulator token (star with five in it)
- 439 - No longer available
- 440 - Early Pace decal

BACK LIPS

- 215 - Pace back lip for coin acceptor
- 219 - Pace Bantam
- 220 - Watling
- 221 - Mills 2"
- 223 - Pace
- 224 - Mills 2-1/4"
- 225 - Jennings
- 441 - Caille Doughboy
- 459 - Jennings Victoria - not pictured
-
- 442 - Early Jennings vendor covers
- 443 - Q.T. jackpot window frame



MISCELLANEOUS

- 229 - Mills marquee - 2-3/4" x 5-1/2" (inside)
- 230 - Mills marquee
- 231 - Mills marquee - 3" x 5-1/2" (inside)
- 232 - Mills marquee card - 3-1/2" x 6"
- 233 - Caille back plate
- 234 - Bursting Cherry jackpot casting plate
- 235 - Skyscraper jackpot casting plate
- 236 - Bursting Cherry Gold Award casting plate
- 237 - War Eagle jackpot casting plate
- 238 - Escalator window frame

AWARD CARD FRAMES (CHROMED)

- 239 - Cast iron Operator's Bell
- 240 - Bursting Cherry
- 241 - FOK
- 242 - Mills Poinsetta
- 243 - War Eagle
- 244 - Wolf Head
- 245 - Q.T.
- 246 - COK
- 247 - Jackpot spacer
- 248 - Little Duke
- 249 - Pace (ears on top & bottom)
- 250 - Escalator window frame
- 251 - Short FOK
- 252 - Pace (ears on side)
- 253 - Mills Extraordinary

PAPER AWARD CARDS

WATLING

- AC-40 - Win one of the Jackpots
- AC-41 - Payout is under the fruit
- AC-42 - 2-4 pay
- AC-43 - Single Cherry, 2-5 pay
- AC-44 - 3-5 pay
- AC-45 - Gold Award 3-5 pay
- AC-46 - Gold Award 2-4 pay

JENNINGS

- AC-50 - Special Gold Award
- AC-51 - Early Victoria, Five Cent Play, 3-5 pay
- AC-52 - Early Victoria, Quarter Play, 2-4 pay
- AC-53 - Early Victoria, Half Dollar Play, 2-4 play
- AC-54 - Nickel Play, 2-4 pay, 4-1/2" x 5-1/2"
- AC-55 - Five Cent Play
- AC-56 - Twenty Five Cent Play

LITTLE DUKE

- AC-60 - Little Duke, One Cent Play
- AC-61 - Little Duke, Five Cent Play

CAILLE

- AC-70 - Play Nickels - 3 reel
- AC-71 - Play Dimes - 3 reel
- AC-72 - Play Quarters - 3 reel
- AC-73 - Play Nickels - 4 reel, 3-1/4" x 10-3/4"
- AC-74 - Play Dimes - 4 reel
- AC-75 - Play Quarters - 4 reel
- AC-76 - Play Nickels - No Jackpot, 3-3/4" x 12"

MISCELLANEOUS

- AC-80 - Fortune Card, 3-1/2" x 5-1/2"

JENNINGS

AC-51

SPECIAL GOLD AWARD

	100
	19 to 21
	17 to 19
	17 to 19
	13 to 15
	13 to 15
	9 to 11
	9 to 11
	4 to 6
	4 to 6
	3

AC-50

FIVE CENT PLAY

FOLLOWING COMBINATIONS PAY REWARDS AS SHOWN BELOW:

	JACKPOT	18
	13	11
	5	3

N.B. Rewards only paid when spots or signals are shown in exact position as on reward cards. Reverse position pays nothing.

Nickel Play

FOLLOWING COMBINATIONS PAY REWARDS AS SHOWN BELOW:

	JACKPOT	20
	16	12
	8	4
	2	

N. B. REWARDS ONLY PAID WHEN SPOTS OR SIGNALS ARE SHOWN ON REELS IN EXACT POSITION AS ON REWARD CARDS. REVERSE POSITION DON'T PAY ANYTHING.

L. B. 709-A

AC-54

NICKEL Five Cent Play NICKEL

	Gets 20 Trade Checks
	Gets 16 Trade Checks
	Gets 12 Trade Checks
	Gets 8 Trade Checks
	Gets 4 Trade Checks
	Gets 2 Trade Checks

N. B. Rewards only paid when spots or signals are shown on reels in exact position as on reward cards. Reverse positions don't pay anything.

AC-55

LITTLE DUKE

AC-60

ONE CENT PLAY

FOLLOWING COMBINATIONS PAY REWARDS AS SHOWN BELOW:

	OR		OR		OR		OR		JACKPOT
2		4		8		12		16	20

N. B. Rewards only paid when spots or signals are shown on reels in exact position as on reward cards. Reverse position pays nothing.

AC-73

CAILLE

Play Nickels

REWARDS ARE PAID ONLY WHEN THESE COMBINATIONS ARE SHOWN ON REELS AND IN LINE WITH ARROW. REVERSE POSITIONS DO NOT PAY.

3 BARS IN LINE WINS THE JACK-POT



THIS IS ADDITIONAL TO REGULAR REWARD

	20
	16
	16
	12
	12

8	
8	
4	
4	
2	

Play Nickels

	RECEIVES 20
	RECEIVES 16
	RECEIVES 16
	RECEIVES 12
	RECEIVES 12

	RECEIVES 8
	RECEIVES 8
	RECEIVES 4
	RECEIVES 4
	RECEIVES 2

REWARDS ARE PAID ONLY WHEN SPOTS ON REELS CORRESPOND WITH THOSE ON REWARD CARD. REVERSE POSITIONS DO NOT PAY

CARD NO. 61 PRINTED IN U. S. A.

Courage and strength are your two best assets.

You will soon start on a four-week journey.

A family of four will bring you happiness.

Within eight years you will enjoy prosperity.

The eighth day of each month is your lucky day.

Your ambition will be realized in twelve months.

December, the twelfth month, is your luckiest.

You will have a child sixteen months after marriage.

A girl of sixteen will soon enter your life.

After twenty years fortune will smile on you, but you get your jack now.

AC-80

AC-76



Metal Form Products Co.

CATALOG

13052 RAYMER ST.

NORTH HOLLYWOOD, CA 91605

(818) 764-2680 FAX (818) 764-1758

March 2007

Email mfpcomp@msn.com

Jack, Caryl, Nils

CASE

MILLS

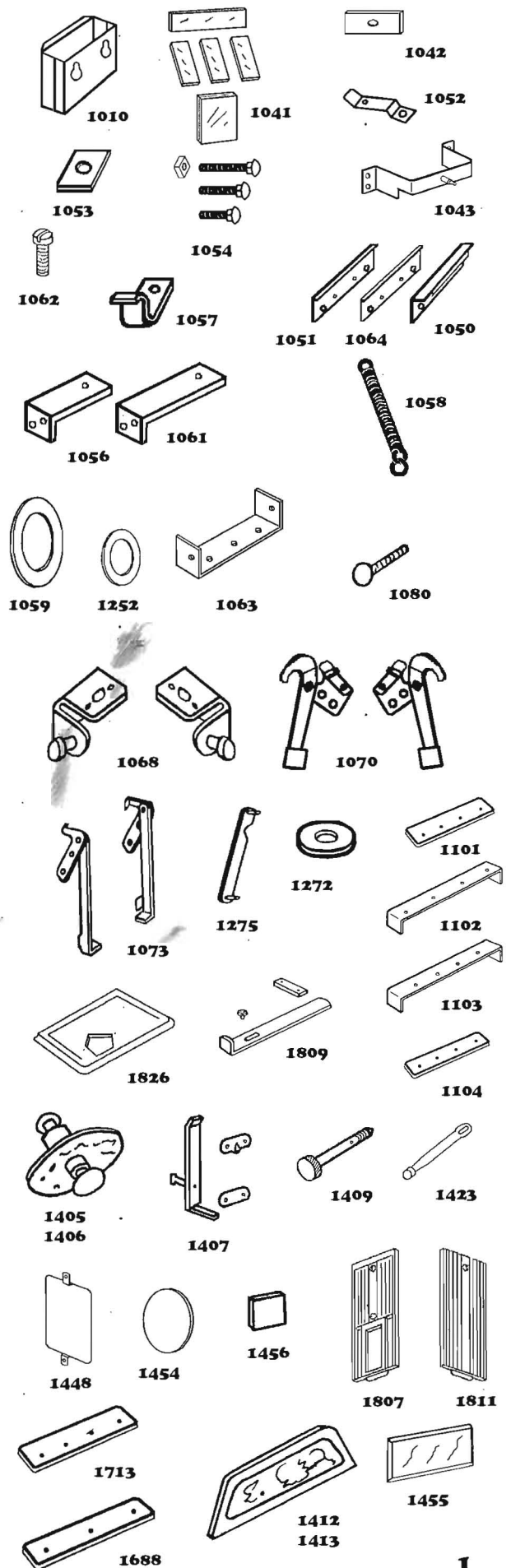
# 1010	Slug box	5.00	Plated.
# 1041	Glass kit	7.50	All glass. 5 pieces.
# 1042	Clamp	.15	For medallions and decos.
# 1043	Jackpot bracket	5.00	For Hitop. With stud.
# 1050	Case guard rail	3.50	J shape. Early style.
# 1051	Case guard rail	3.50	L shape. Late style.
# 1052	Clamp clip	2.00	
# 1053	Money bowl clamp	.15	
# 1054A	Carriage bolt	.25	Nickled. 1/2" long. W/nuts
# 1054B	" "	.25	with 7/8" long. "
# 1054C	" "	.25	polished 1" long. "
# 1054E	" "	.25	heads 1 1/4" long. "
# 1054F	" "	.25	2" long. "
# 1055	Package carriage bolts	12.00	50 pcs. + sq. nuts. Size?
# 1056	Sub base to casting br.	3.00	Half top.
# 1057	Mech. stop bracket	2.50	
# 1058	Handle return spring	2.50	With end ring.
# 1059	Handle wear spacers	.70	Takes up wear. .015 thick.
# 1061	Sub base to casting br.	3.00	Hitop.
# 1062	Gooseneck screw	.25	Philister Hd. Nickled.
# 1063	Air pump base bracket	4.00	
# 1064	Top guard rail	2.00	Made of thinner material.
# 1068	Bonnet clamp base	5.00	W/roller. Right or left.
# 1070	Bonnet clamp	10.00	W/clip. Right or left.
# 1073	Mech. Hold down	5.00	Right or left. Price each.
# 1080B	Slotless bib screws	.25	6-32 black oxide.
# 1080N	Slotless bib screws	.25	6-32 nickle plated.
# 1101	Bonnet strap	4.00	Gooseneck. Flat.
# 1102	Bonnet strap	5.00	Bolt on latch bases. Hitop.
# 1103	Bonnet strap	5.00	Cast latch bases. Halftop.
# 1104	Bonnet strap	4.00	Extra. War Eagle, Blue Front
# 1252	Handle wear spacer	.60	QT. Takes up wear. .015
# 1272	Sub base washer	.15	Thick, odd diameter.
# 1275	Upper piston link	3.50	Air pump linkage.

JENNINGS

# 1807	Dutchess vender door	35.00	With glass. No lock.
# 1809	Door lock bar for G.N.	12.50	With strap and screw.
# 1811	Dutchess vender door	35.00	Solid door. No lock.
# 1826	Little Duke base	40.00	Base only.
# 1828	Back door hardware	15.00	Complete set of 4 pcs.

CAILLE

# 1405	Skill stop plate	30.00	For Lady. Casting only.
# 1406	Skill stop	20.00	For Lady. Button assy.
# 1407	Marquee door latch	15.00	For Superior.
# 1409	Marquee door screws	8.50	For Sphinx. 2 required.
# 1412	Marquee door	35.00	For Superior. Casting only.
# 1413	Marquee door	35.00	For Sphinx. Casting only.
# 1423	Bent coin rod	4.00	On back of marquee.
# 1448	Award card backing	4.00	Plate for award card.
# 1454	Round glass for Jackpot	7.50	3/16" thick.
# 1455	Superior glass	15.00	Ground beveled edges.
# 1456	Superior jackpot glass	2.00	
# 1688	Strap -flat	4.00	Pace
# 1713	Strap -flat	4.00	Watling



CASH BOXES

MILLS

# 1000	Round hole - 20's-30's	16.00	Hinged door. Tin with flap.
# 1001	Rect. hole -- Hitop	16.00	Hinged door. Tin with flap.
# 1002	Rect. hole -- QT	16.00	Hinged door. Tin with flap.
# 1003	Open top	8.00	Generic. Tin plate.
# 1011	Vest pocket	20.00	With lid. Tin plate.
# 1901	Dice machine	20.00	Plated.

JENNINGS

# 1801	Dutchess	20.00	Tin plate.
# 1830	Gooseneck	20.00	Tin plate.
# 1835	Sunchief		Tin plate with spring flap.
# 1837	Sunchief with lock plate		Tin plate with spring flap.

CAILLE

# 1410	Superior - Sphinx	20.00	Tin plate. Slide top.
# 1411	Cadet-Commander	15.00	Tin plate. Hinged top.

WATLING

# 1701	Rolatorp or Bluseal	20.00	Hinged door. Unpainted.
--------	---------------------	-------	-------------------------

BALLY DICE MACHINE

# 1900	With flap	40.00	Hinged door. Tin plate.
--------	-----------	-------	-------------------------

A. C. MULTIBELL

# 1414	Hinged	50.00	Duplicates original. Steel.
--------	--------	-------	-----------------------------

ESCALATOR

MILLS

# 1025	Coin detector pin	1.00	
# 1026	Leather stop pad	.75	
# 1027	Stop pad mounting brkt.	3.00	
# 1028	Coil spring	2.00	Package of 4. MLB 2735
# 1029	Alligator spring	1.00	MLB 2731
# 1030	Advance bar spring	2.00	MLB 2728
# 1031	Glass frame-clamp	5.00	Plated.
# 1032	Teeter totter spring	1.00	MLB 2864

VENDERS

MILLS

# 1305	Owl vender	350.00	Polished. 325.00 unpolished.
# 1315	Sword vender	350.00	Polished. 325.00 unpolished.
# 1320	Side vender rails	5.00	With rivets.
# 1325	Release lever	10.00	With trip. Original part.
# 1330	Vender linkage	25.00	Plated.
# 1332	Side vender cover plate	5.00	With hardware.

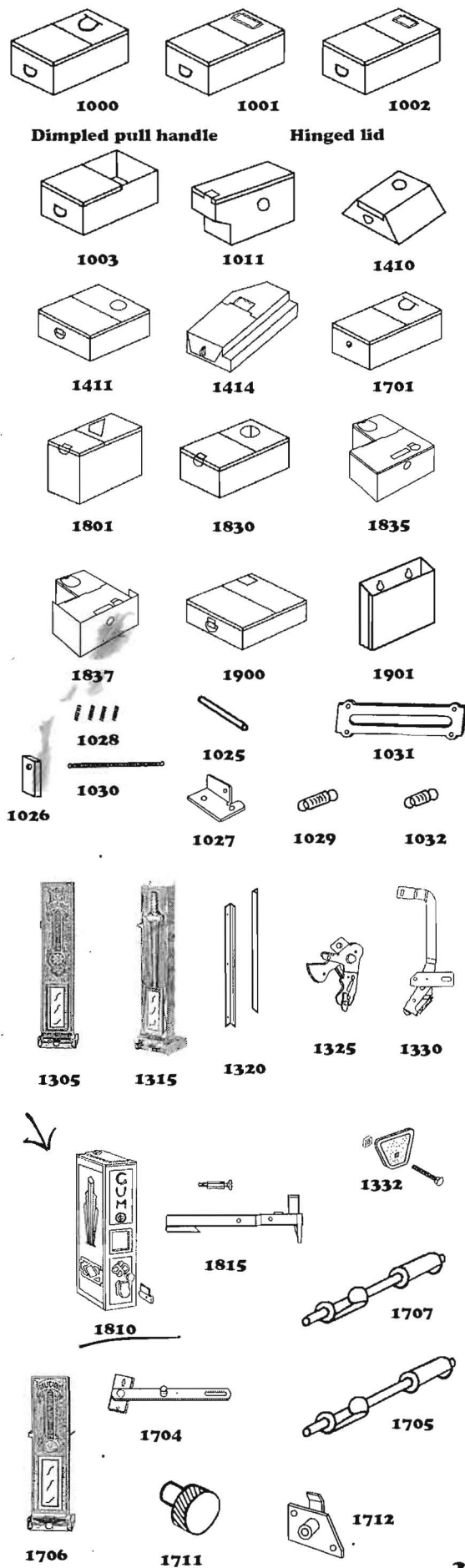
JENNINGS

# 1810	Little Duke side vender	500.00	Polished.
# 1815	Linkage	25.00	For Little Duke.

WATLING

# 1704	Vender link	22.50	Plated. Blue Seal and Rolatorp
# 1705	Vender roll	45.00	Rolatorp. All brass.
# 1706	Side vender	350.00	Polished.
# 1707	Vender roll	45.00	Blue Seal. All brass.
# 1711	Vender roll knob	15.00	Brass, unplated.
# 1712	FOK lock	22.50	For vender front

Spring loaded coin door



BACK DOORS

MILLS

# 1009	Cash box door	10.00	Original part. No lock.
# 1075	Regular	24.00	Welded, radiused corners
# 1076	FOK	25.00	Baked black wrinkle finish.
# 1078	QT	10.00	Cash door - For orig. lock.
# 1079	QT	10.00	Cash door - replacement lock
# 1081	Lock fits Mills / Jennings	8.00	Replacement.
# 1082	Lock plate	3.00	
# 1083	Screw shield	5.00	Original part.
# 1902	Dice machine	40.00	No finish.
# 2154	Back door paper	1.00	5 for 3.00. Dates 1929, 1932, 1934, 1935, 1936, 1937
# 2155	Back door paper	1.00	5 for 3.00. Dated 1947.
# 2156	QT door paper	1.00	5 for 3.00.

JENNINGS

# 1081	Lock	8.00	Replacement.
# 1802	Dutchess	37.50	Black wrinkle. All brackets.
# 1828	Little Duke Hdwr.	15.00	Set of 4 pcs. Brkts. Only.
# 2157	Back door paper	1.00	5 / 3.00 Régular.
# 2158	Back door paper	1.00	5 / 3.00 Little Duke.

CAILLE

# 1415	Door. Superior lady	60.00	Wood center. Less lock.
# 1416	Door. Superior	30.00	Welded, radiused. Black wrinkle finish.
# 1417	Door. Sphinx	30.00	same
# 1418	Door. Dictator	30.00	same
# 1419	Door. Cadet	30.00	4 sided.
# 1420	Door. Cadet-Comm	30.00	3 sided. No finish.
# 1430	Victory centerpull	75.00	Wood center. Less lock.
# 1449	Back door paper	1.50	Superior.
# 1452	Back door paper	1.50	Superior Naked Lady.
# 1907	Lock	5.00	

WATLING

# 1708	FOK	60.00	Wood center.
# 1710	Blue seal	24.00	With brackets. Blk. wrinkle.

COLUMBIA

# 1990	Door 11.9 W x 11.3 H	24.00	Black wrinkle.
--------	----------------------	-------	----------------

BALLY

# 1903	Reliance	40.00	Black wrinkle.
# 1907	Lock	5.00	

A. C. MULTIBELL

# 1991	Door	50.00	No finish. All brackets.
# 1907	Lock	5.00	

PACE

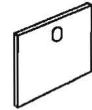
# 1689	Door for cylinder lock	24.00	Black wrinkle.
# 1690	Door for original lock	25.00	Black wrinkle.
# 1691	Back door paper	1.00	Black. 5/3.00
# 1695	Bantam back door	20.00	Unpainted.

STIMULATOR DOORS

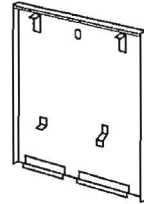
Dandy Vender	Wings	Klix	Pokoreel	Yankee
Gem	Superior Gum Vender		Twenty One	



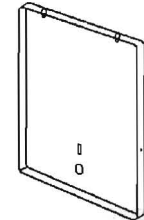
1009



1078



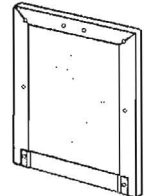
1802



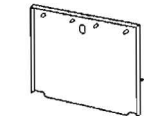
1416



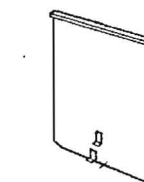
1419



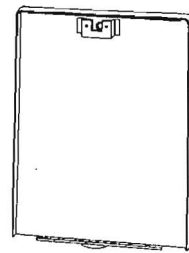
1708



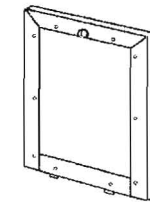
1903



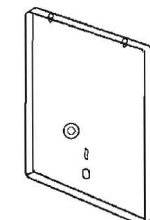
1695



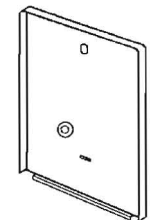
1075



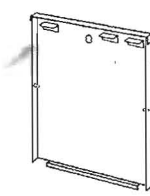
1415



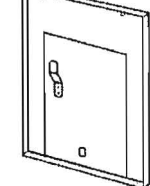
1417



1420



1710



1991



1081



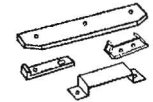
1082



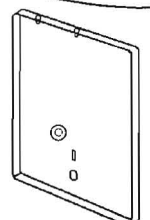
1083



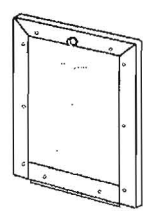
1907



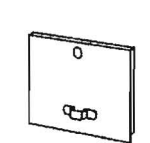
1828



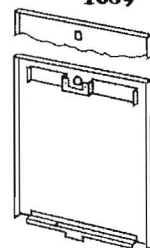
1418



1430



1990



1689

1690



AUTHENTIC

RE-CREATED

*Time Difference
3 hours different*

SLOT PAPER

FOR YOUR ANTIQUE SLOT MACHINES

EVANS & FRINK

2977 EAGER, HOWELL, MICHIGAN 48843

CAT. 6, 3-94

AWARD CARD SHEET #3

3 W B 3

QUARTER PLAY
 TEN CENT PLAY
 SILVER DOLLAR

SPECIAL GOLD SEAL

 A LUCKY POCKET PIECE

THIS TAKES ONE JACK POT

 THIS TAKES ONE JACK POT

 THIS TAKES ONE JACK POT

Play Quarters

THE JACK POT



FIVE CENT PLAY

HALF DOLLAR PLAY

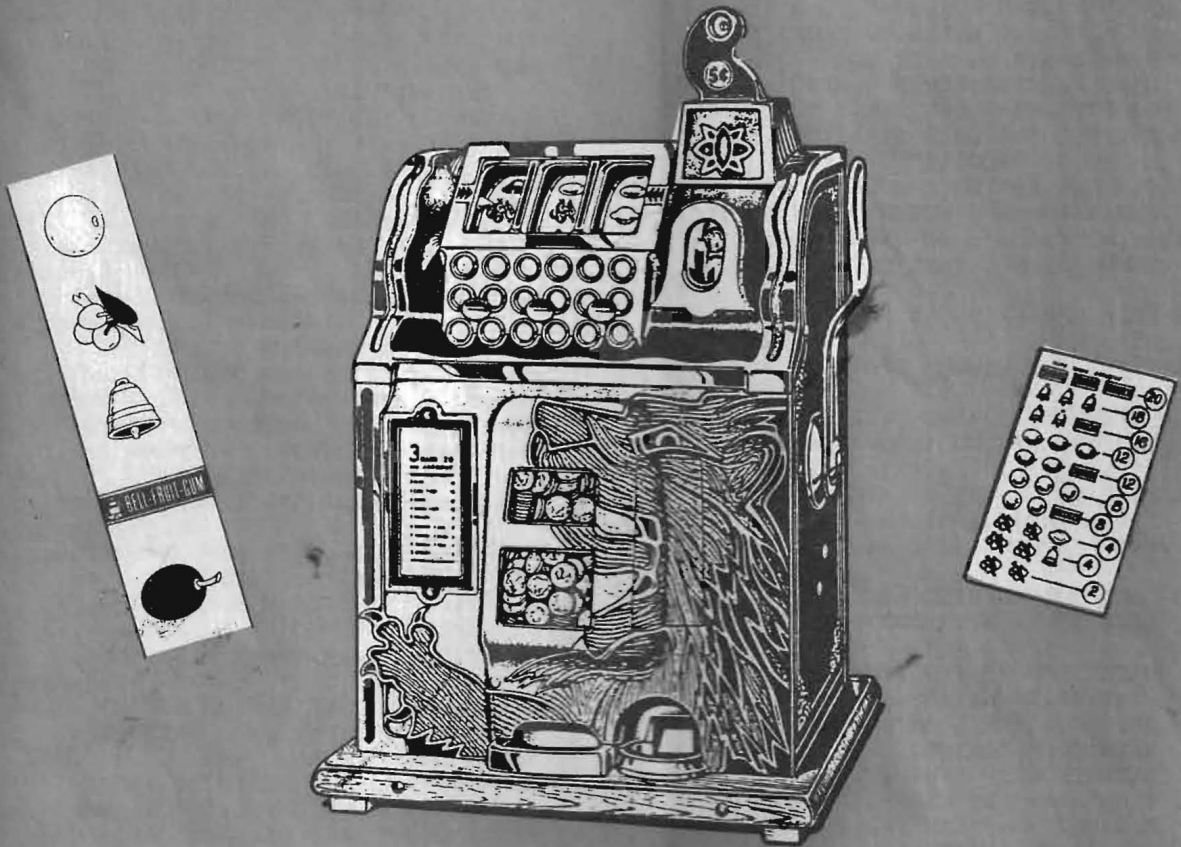
Play Nickels



SLOT MACHINE SPRINGS



COMPLETE PARTS SERVICE



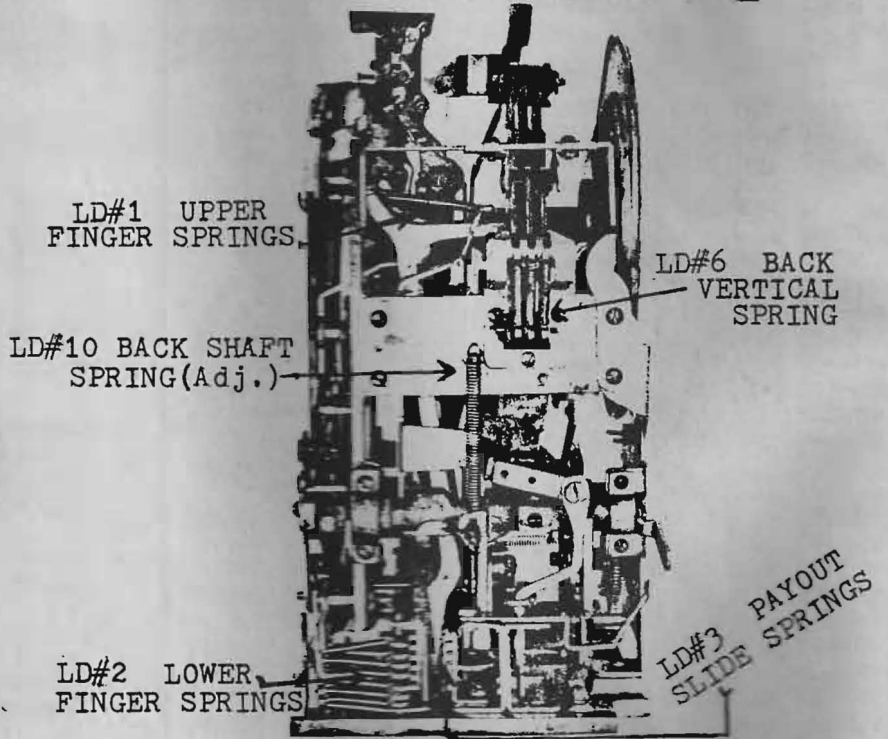
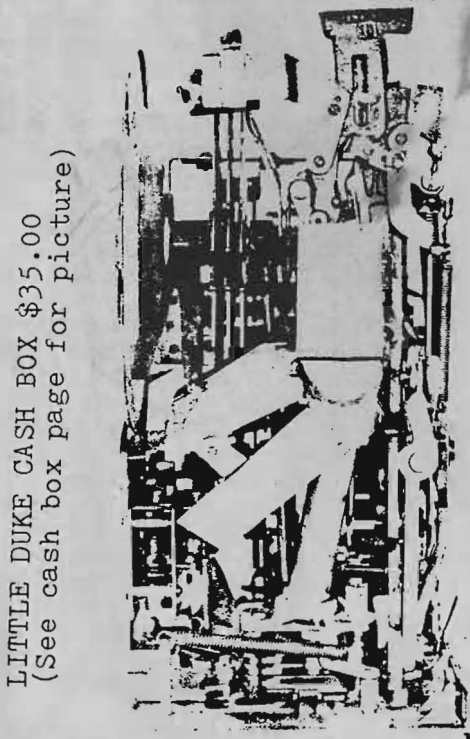
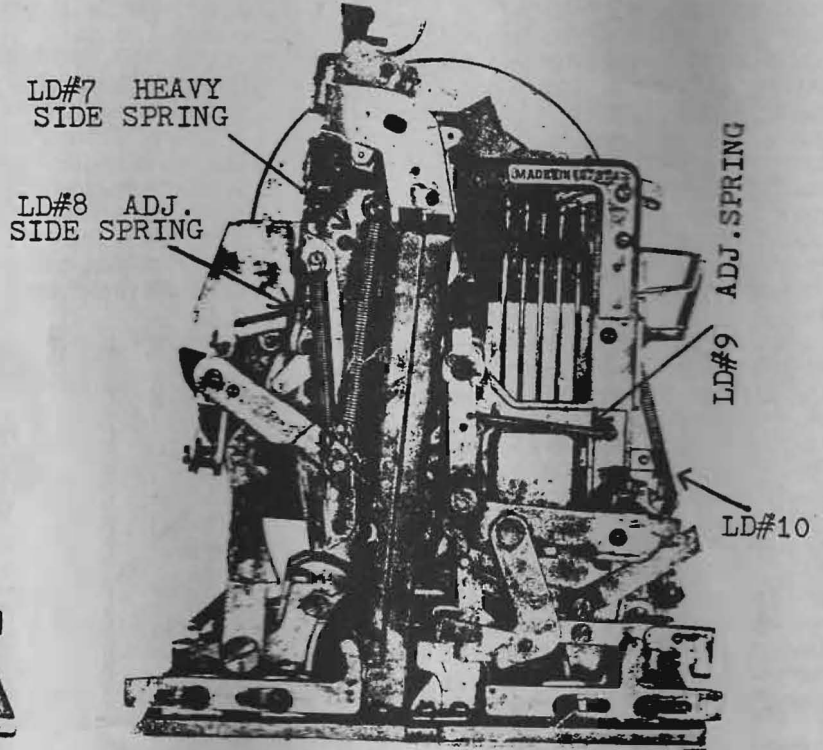
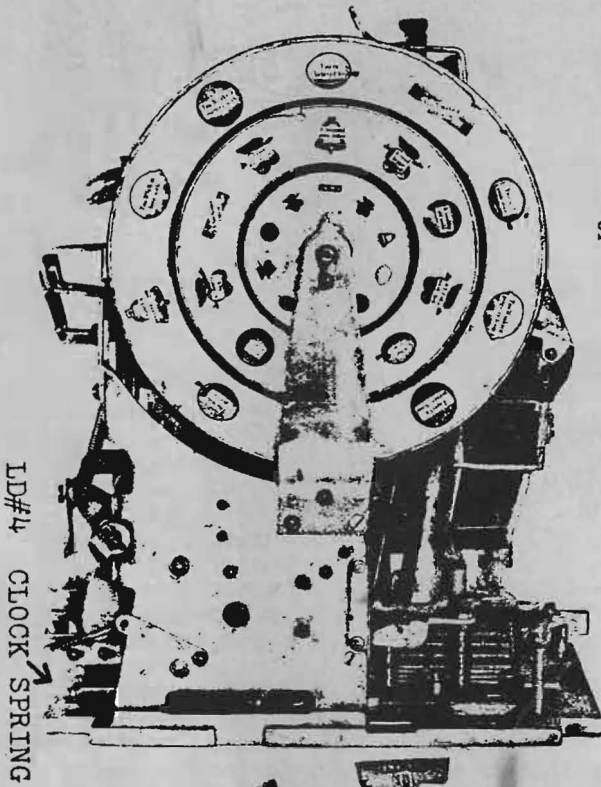
1932 Mills "Super Bell"

BERNIE BERTEN

9420 So. TRUMBULL AVENUE
EVERGREEN PARK, ILLINOIS 60805
(708) 499-0688 FAX (708) 499-5979

4 LITTLE DUKE SPRINGS

FOR LITTLE DUKE SLOT MACHINES, EXACT DUPLICATE OF WIRE & TENSION



EXACT DUPLICATE OF WIRE & TENSION

LD#1	UPPER FINGER SPRINGS	6 FOR 2.00
LD#2	LOWER FINGER SPRINGS	7 FOR 2.50
LD#3	PAYOUT SLIDE SPRINGS	5 FOR 4.50
LD#4	CLOCK SPRING	1 FOR 3.00
LD#5	HANDLE SPRING	1 FOR 3.00
	(attaches to inside cabinet)	
LD#6	BACK VERTICAL SPRING	3 FOR 3.00
LD#7	HEAVY SIDE SPRING	1 FOR 4.50
	(main operating)	

LD#8	ADJ SIDE SPRONG	1 FOR 3.00
	(next to main above)	
LD#9	ADJ SPRING	1 FOR 3.00
	(side of mach below vert fingers)	
LD#10	BACK SHAFT SPRING (adj)	1 FOR 3.25
LD	INSTR BACK DOOR SHEET	1 FOR 1.00
LD	LK LOCK FOR LITTLE DUKE	1 FOR 8.00

PACKAGED SETS OF SPRINGS

MILLS WAR EAGLE, HIGH TOP, CASTLE FRONT, ETC	73.25
MILLS GOOSENECK	58.50
MILLS DEWEY	75.00
JENNINGS SUN CHIEF, FOUR STAR, ETC	80.50
LITTLE DUKE	31.75
WATLINGS	53.65
PACE	62.00

MONEY BOWLS

MILLS BLACK CHERRY - GOLDEN NUGGET (ea)	32.00
MILLS GOOSENECK - BURSTING CHERRY (ea)	18.00
MILLS CASTLE FRONT - WAR EAGLE (ea)	18.00
MILLS HIGH TOP (OLD & NEW STYLE) (ea)	18.00
WATLING MONEY TRAY	30.00
LITTLE DUKE	25.00
CAILLE SUPERIOR	20.00
JENNINGS STANDARD CHIEF	40.00
JENNINGS SUN CHIEF	40.00

HANDLES

HIGH TOP	50.00
BLACK CHERRY, WAR EAGLE, ETC.	65.00
LITTLE DUKE	100.00
MILLS GOOSENECK FLAT STEEL	65.00
PACE	100.00
JENNINGS	65.00

HUBS

MILLS HIGH TOP-WAR EAGLE-GOOSENECK	25.00
--	-------

MILLS GOLD AWARD TOKENS 6.00

CAILLE 4 REEL CARD - \$6.00



CARD NO 0605 PRINTED IN U.S.A.

MILLS Q.T. PLATE \$6.00



3 BARS.. 20 and JACKPOT

3 Bells	16
2 Bells, 1 Bar	16
3 Plums	12
2 Plums, 1 Bar	12
3 Oranges	8
2 Oranges, 1 Bar	8
2 Cherries, 1 Lemon	4
2 Cherries, 1 bell	4
2 Cherries	2

SPECIAL GOLD AWARD

3 JACKPOT	200
3 BARS	20
3 Bells	18
2 Bells, 1 Bar	18
3 Plums	14
2 Plums, 1 Bar	14
3 Oranges	10
2 Oranges, 1 Bar	10
2 Cherries, 1 Lemon	5
2 Cherries, 1 bell	5
2 Cherries	3

THIS TAKES JACK POT

3 JACKPOT	20
3 Bells	18
2 Bells, 1 Bar	18
3 Plums	14
2 Plums, 1 Bar	14
3 Oranges	10
2 Oranges, 1 Bar	10
2 Cherries, 1 Lemon	5
2 Cherries, 1 bell	5
2 Cherries	3

THIS TAKES JACK POT

3 JACKPOT	20
3 Bells	16
2 Bells, 1 Bar	16
3 Plums	12
2 Plums, 1 Bar	12
3 Oranges	8
2 Oranges, 1 Bar	8
2 Cherries, 1 Lemon	4
2 Cherries, 1 bell	4
2 Cherries	2

AWARD CARDS ON THIS PAGE \$10.00 EACH
 ALSO AVAILABLE AS ANTIQUE AWARD CARDS \$15.00 EACH

JACK POT

3 JACKPOT	20
3 Stars	12
2 Stars, 1 Heart	8
3 Stars, 1 Shield	4
2 Stars, 1 Cross	2
2 Stars, 1 Triangle	2
2 Stars, 1 Circle	2

JACK POT

3 JACKPOT	20
3 Clubs	12
2 Clubs, 1 Bell	8
3 Clubs, 1 Circle	4
2 Clubs, 1 Bar	2
2 Clubs, 1 Circle	2
2 Clubs, 1 Circle	2

THIS TAKES JACK POT

3 JACKPOT	19? 22
3 Bells	17? 19
2 Bells, 1 Bar	17? 19
3 Plums	13? 15
2 Plums, 1 Bar	13? 15
THE COMET	
3 Oranges	9? 11
2 Oranges, 1 Bar	9? 11
2 Oranges, 1 Moon	4? 6
2 Oranges, 1 Bell	4? 6
2 Oranges	2? 4

THIS TAKES JACK POT

3 JACKPOT	20
3 Bells	18
2 Bells, 1 Bar	18
3 Plums	14
2 Plums, 1 Bar	14
THE COMET	
3 Oranges	10
2 Oranges, 1 Bar	10
2 Oranges, 1 Moon	5
2 Oranges, 1 Bell	5
2 Oranges	3

WE HAVE MORE THAN 100 DIFF. AWARD CARDS IN PAPER & METAL. WRITE AND LET US KNOW WHAT YOU NEED.

